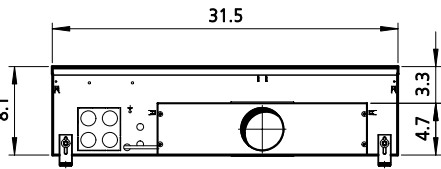
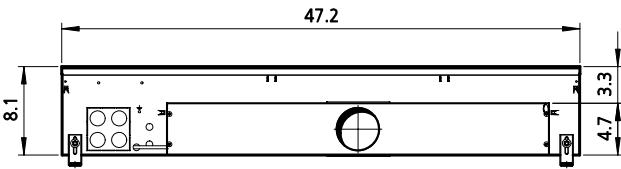


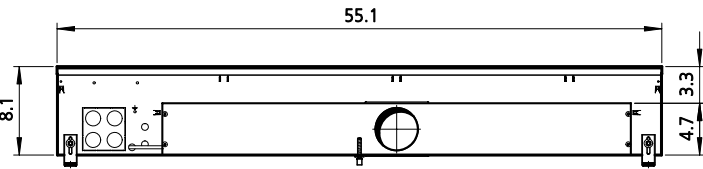
Technische Zeichnungen, Katherm ID (B340, H205), Abmessungen [Inch] / Technical drawings, Katherm ID (B340, H205), Dimensions [Inch]



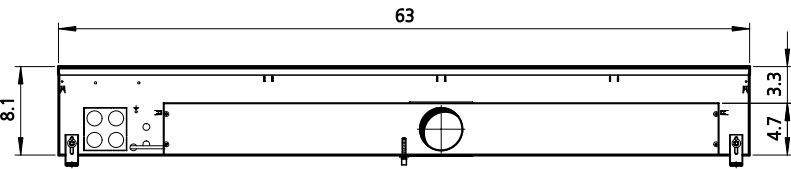
Vorderansicht / Front view



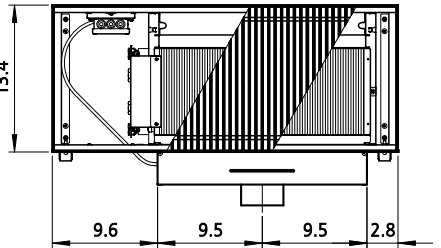
Vorderansicht / Front view



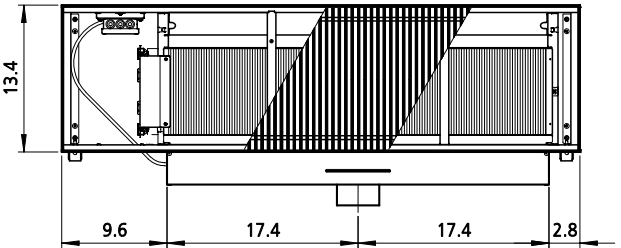
Vorderansicht / Front view



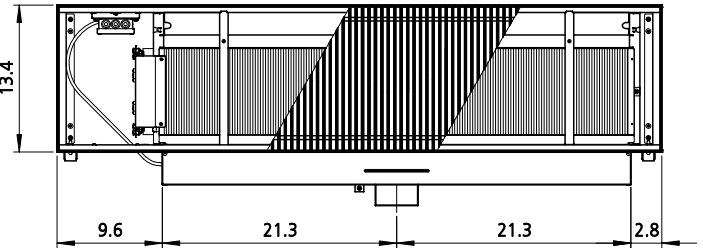
Vorderansicht / Front view



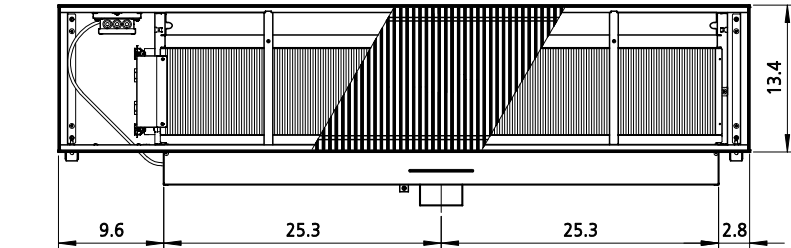
Draufsicht / Top view



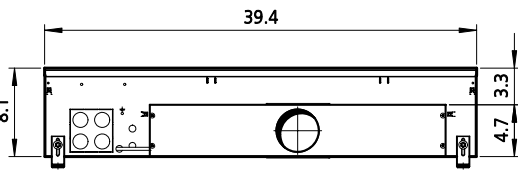
Draufsicht / Top view



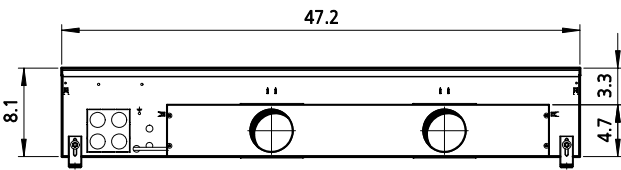
Draufsicht / Top view



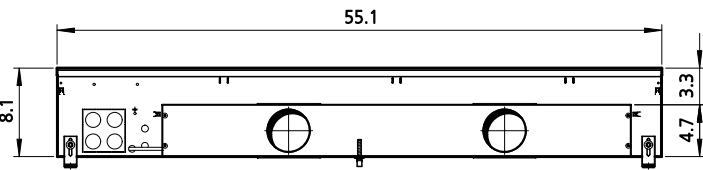
Draufsicht / Top view



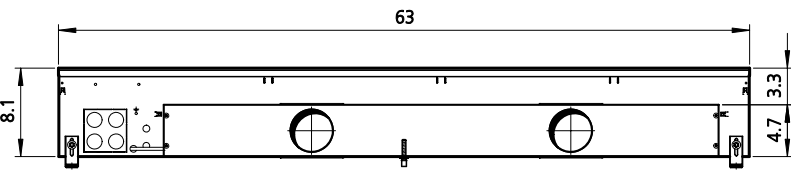
Vorderansicht / Front view



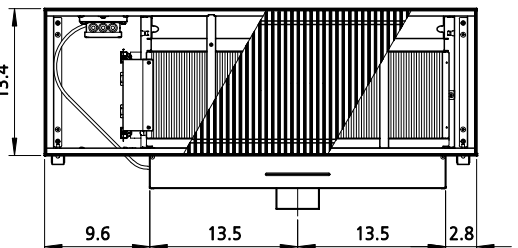
Vorderansicht / Front view



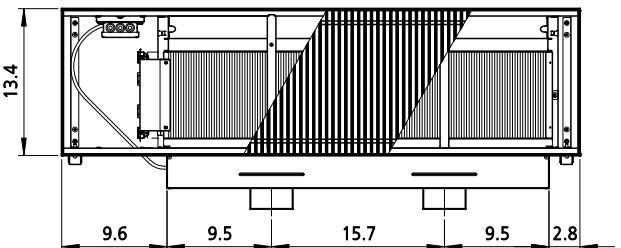
Vorderansicht / Front view



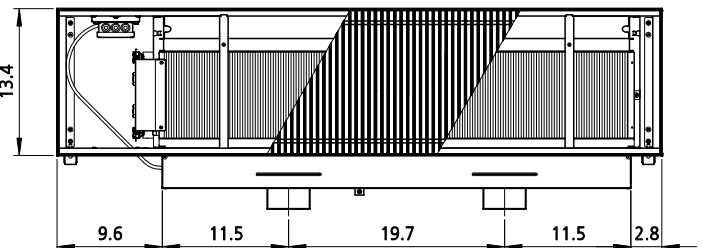
Vorderansicht / Front view



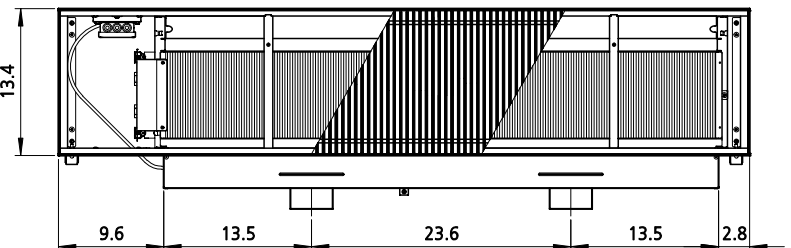
Draufsicht / Top view



Draufsicht / Top view

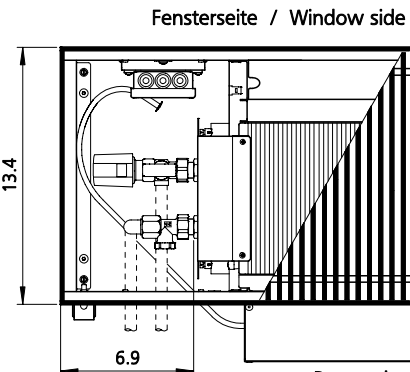


Draufsicht / Top view

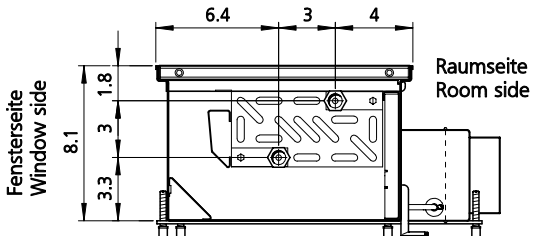


Draufsicht / Top view

Details, Beispiel 2-Leiter  
Details, example 2-pipe

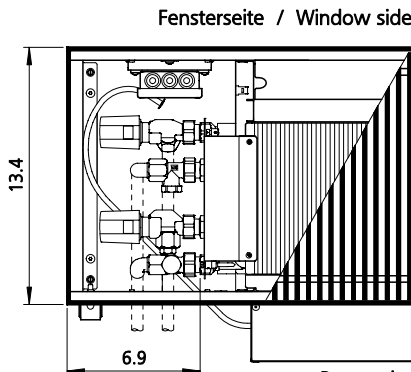


Draufsicht mit Ventilkit (optional)  
Top view with valve kit (optional)

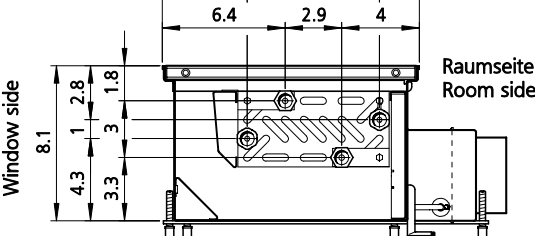


Schnitt / Cross-section

Details, Beispiel 4-Leiter  
Details, example 4-pipe

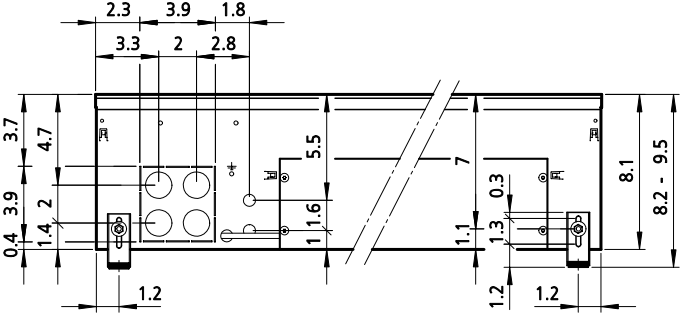


Draufsicht mit Ventilkit (optional)  
Top view with valve kit (optional)



Schnitt / Cross-section

Details, Beispiel für 2- und 4-Leiter  
Details, example for 2- and 4-pipe



Vorderansicht / Front view

Anzahl Stutzen  
Number of connecting pieces

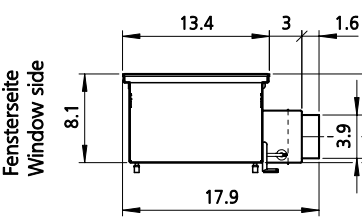
L	K1	K2	K3	K4
31.5	1	1	1	1
39.4	1	1	1	1
47.2	1	1	1	2
55.1	1	1	1	2
63.0	1	1	2	2

L = Längen / lengths in Inch

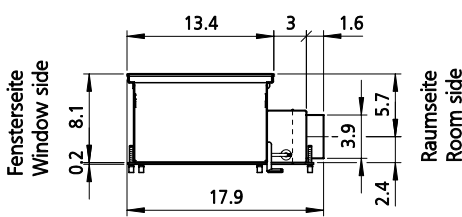
Primärluftvolumenstrom:  
Primary air volume:  
K1 = niedrig / low  
K2 = mittel / medium  
K3 = hoch / high  
K4 = sehr hoch / very high

< 47 cfm  
= 1 Stutzen  
1 Connecting piece

>= 47 cfm  
= 2 Stutzen  
2 Connecting pieces



Seitenansicht für Längen 31.5 / 39.4 / 47.2 Inch  
Side view for lengths 31.5 / 39.4 / 47.2 Inch



Seitenansicht für Längen 55.1 / 63 Inch  
Side view for lengths 55.1 / 63 Inch

Draufsichten ohne Anschlussabdeckung / Top views without cover plate

Datum	Name	Format	Art-Gr.	Version	CAD-Nr.
Erst. 26.10.21	SW	3	241	1	884204
Änder. 30.05.22	SW				
<b>KAMPMANN</b> 49794 Lingen (Ems) Tel. (0591) 7108-0 • Fax 7108-300 eMail: info@kampmann.de Internet: www.kampmann.de					
CAD-Zeichnung Ansichten Katherm ID Abmessungen					
Angeb.-Nr. Auftr.-Nr.					
Index	Änderung	Datum	Name	Zul.Abw. ISO 2768-m	Bereich Dokumentation Maßstab 1:17,5 Blatt