



► PowerKon + ST

PowerKon + ST

“Safe Touch” low surface temperature convector

► **Technical Catalogue**

Contents

01 ▶ Product information 6

- ▶ Overview 7
- ▶ Product data 8
- ▶ Selection assistance: overview of models 9
- ▶ PowerKon + ST at a glance 10

02 ▶ Technical data 12

- ▶ Advice on measuring conditions 13
- ▶ PowerKon + ST, wall mounted (WTG & WFG) 14
- ▶ PowerKon + ST, floor mounted (FTG & FFG) 15
- ▶ Performance PowerKon + ST 16

03 ▶ Design information 20

- ▶ Information for planning and design 21
- ▶ Installation, bracket fixing detail 22
- ▶ Valve positions 23

04 ▶ Ordering information 24

- ▶ PowerKon + ST 24
- ▶ PowerKon + ST at a glance, Model FTGplus 26

02 ▶ Technical data 28

- ▶ PowerKon + ST floor mounted, Model FTGplus 30
- ▶ Performance PowerKon + ST, Model FTGplus 31

03 ▶ Design information 32

- ▶ Information on planning and design, Model FTGplus 33
- ▶ Installation, bracket fixing detail, Model FTGplus 34
- ▶ Valve positions, Model FTGplus 35

04 ▶ Ordering information 36

- ▶ Accessories 37



PowerKon + ST
Casing and bracketry
coated with an
anti-bacterial and
scratch resistant
epoxy powder



The PowerKon + ST is ideal for the education, healthcare and care sectors.

01 ▶ Product information



Powerkon + ST (floor standing and wall mounted)

The PowerKon + ST is ideal for the education, healthcare and the care sector. Casing and bracketry coated with an anti-bacterial and scratch resistant epoxy powder, colored in RAL 9016, pure white. There are no joints in the casing to gather dirt, dust and potential bacteria.

The new PowerKon + ST „Safe Touch“ low surface temperature convector delivers versatility, safety, highest thermal performance and a high-quality casing which can be installed extremely quickly. All performance data tested in accordance with BS EN 442.

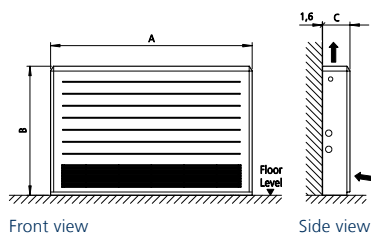
Easy to install, strong single piece profiled casing, made of steel with 3 mm rib details for extra strength and durability, completely with air inlet and air outlet grille at the front as floor standing casing.

Air inlet/outlet grille as pencil proof linear bar grille with max. 7.1 mm bar spacing.

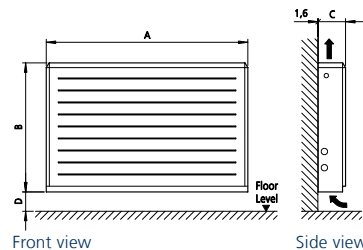
Completely with wall / floor brackets and wall spacer. Security screw locking system to fix casing onto bracketry to prevent unauthorized access.

Low water content PowerKon convector, made of aluminium fins on copper pipes, designed as single water way convector to maximize water turbulence and therefore thermal performance. Convactor with 1/2" fem. BSP bi-directional connections. Working pressure 10 bar, test pressure 16 bar. Convactor coated to RAL 7024, graphite grey.

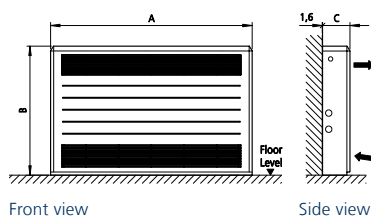
Floor mounted, top air outlet with linear grille (FTG)



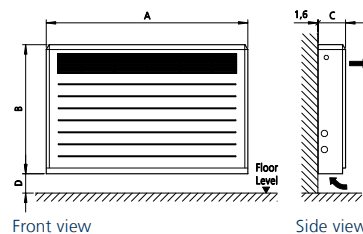
Wall mounted, top air outlet with linear grille (WTG)



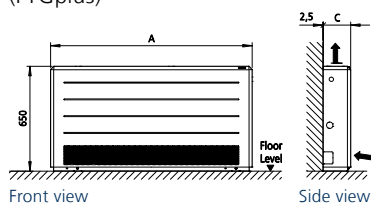
Floor mounted, front air outlet with linear grille (FFG)



Wall mounted, front air outlet with linear grille (WFG)



Floor mounted, top air outlet with perforated profil (FTGplus)



Casing length A	Casing height B	Casing depth C	Floor distance D
[mm]	[mm]	[mm]	[mm]
650	500	120	100
850	650	170	120
1050	800	220	150
1250			
1450			
1650			
1850			
2050			

Attention:

FTGplus only with:

Casing Height: 650 mm

Casing Depths: 170 and 220 mm

Product data



Product Features

- ▶ Low water content PowerKon convector, made of aluminium fins on copper pipes
- ▶ Designed as single way water convector to maximize water turbulence and therefore thermal performance
- ▶ Convector with 1/2" fem. BSP bi-directional connections
- ▶ Working Pressure 10 bar, test pressure 16 bar
- ▶ Convector coated to RAL 7024, graphite grey
- ▶ All performance data tested in accordance with BS EN 442



Features

Model WTG, WFG, FTG, FFG

- ▶ **Casing**
3 heights, 8 lengths, 3 depths
- ▶ **Convector**
2 heights, 8 lengths, 3 depths
- ▶ **Type:** single/twin

Model FTGplus

- ▶ **Casing**
1 height, 8 lengths, 2 depths
- ▶ **Convector**
1 height, 8 lengths, 3 depths
- ▶ **Type:** single

- Convection Heating System**
- ▶ Natural
 - ▶ LPHW
 - ▶ 2-pipe, heating only

- Grille finishes**
- Model WTG, WFG, FTG, FFG**
- ▶ Linear grilles

- Model FTGplus**
- ▶ perforated air inlet, outlet

Uses

The Kampmann Powerkon + ST is ideal for the education, healthcare and care sector.



Healthcare and care sector



Education

Selection guide: overview of models

Powerkon ST

Convector specification

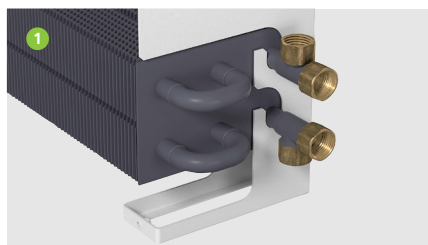
Model	Casing height	Casing depth	Convactor type	Casing lenght	Further information
	[mm]	[mm]		[mm]	
WTG (Wall Top Grille)	500 650 800	120 170 220	Single convector 100S 150S 200S	650 850 1050 1250 1450 1650 1850 2050	► page 14
WTG (Wall Top Grille)	500 650 800	120 170 220	Twin convector 100T 150T 200T	650 850 1050 1250 1450 1650 1850 2050	► page 14
WFG (Wall Front Grille)	500 650 800	120 170 220	Single convector 100S 150S 200S	650 850 1050 1250 1450 1650 1850 2050	► page 14
WFG (Wall Front Grille)	500 650 800	120 170 220	Twin convector 100T 150T 200T	650 850 1050 1250 1450 1650 1850 2050	► page 14
FTG (Floor Top Grille)	500 650 800	120 170 220	Single convector 100S 150S 200S	650 850 1050 1250 1450 1650 1850 2050	► page 15
FTG (Floor Top Grille)	500 650 800	120 170 220	Twin convector 100T 150T 200T	650 850 1050 1250 1450 1650 1850 2050	► page 15
FFG (Floor Front Grille)	500 650 800	120 170 220	Single convector 100S 150S 200S	650 850 1050 1250 1450 1650 1850 2050	► page 15
FFG (Floor Front Grille)	650 800	120 170 220	Twin convector 100T 150T 200T	650 850 1050 1250 1450 1650 1850 2050	► page 15
FTGplus (Floor Top Grille)	650	170 220	Single convector 150S 200S	650 850 1050 1250 1450 1650 1850 2050	► page 30

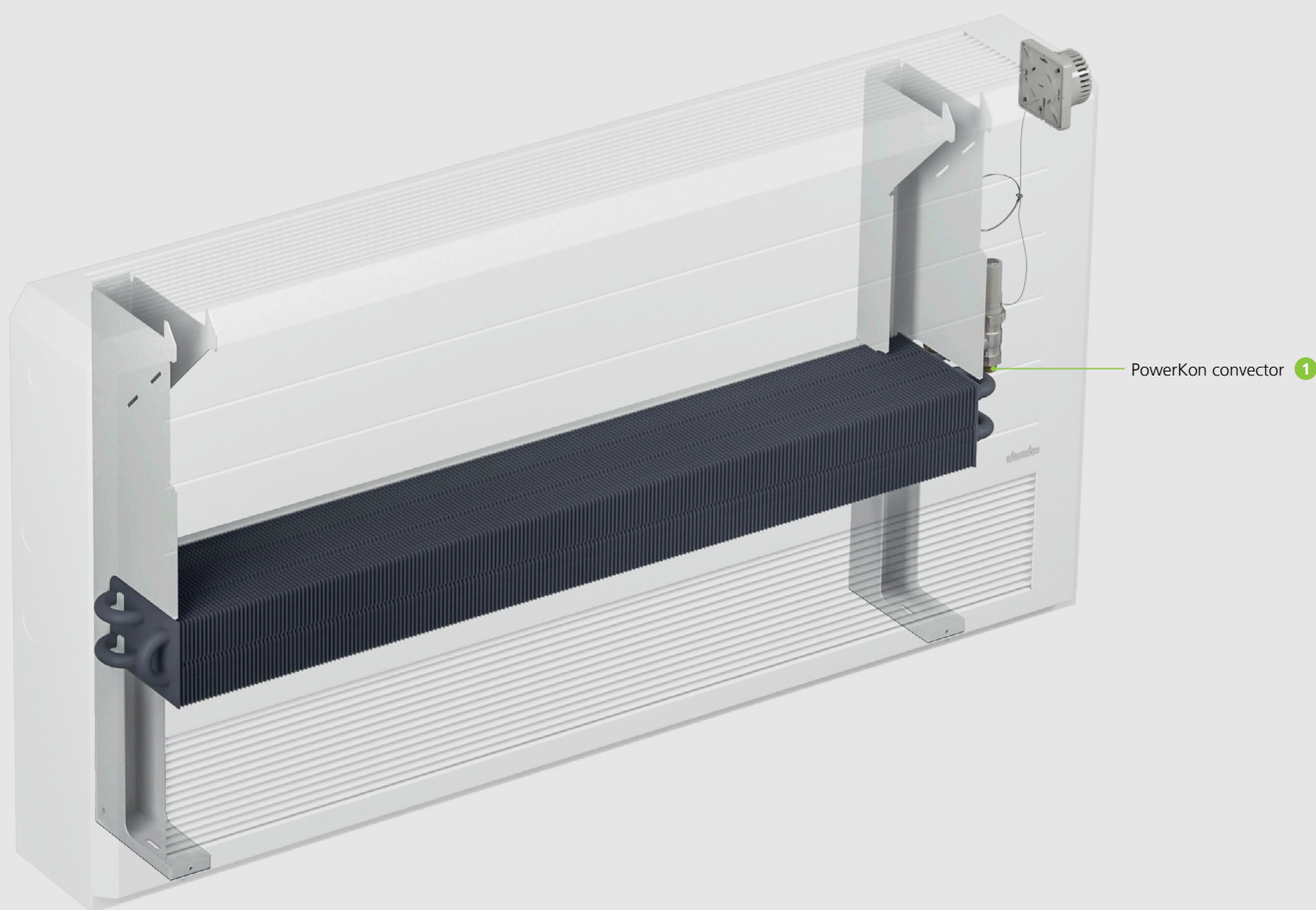
PowerKon + ST at a glance

Model WTG, WFG, FTG, FFG



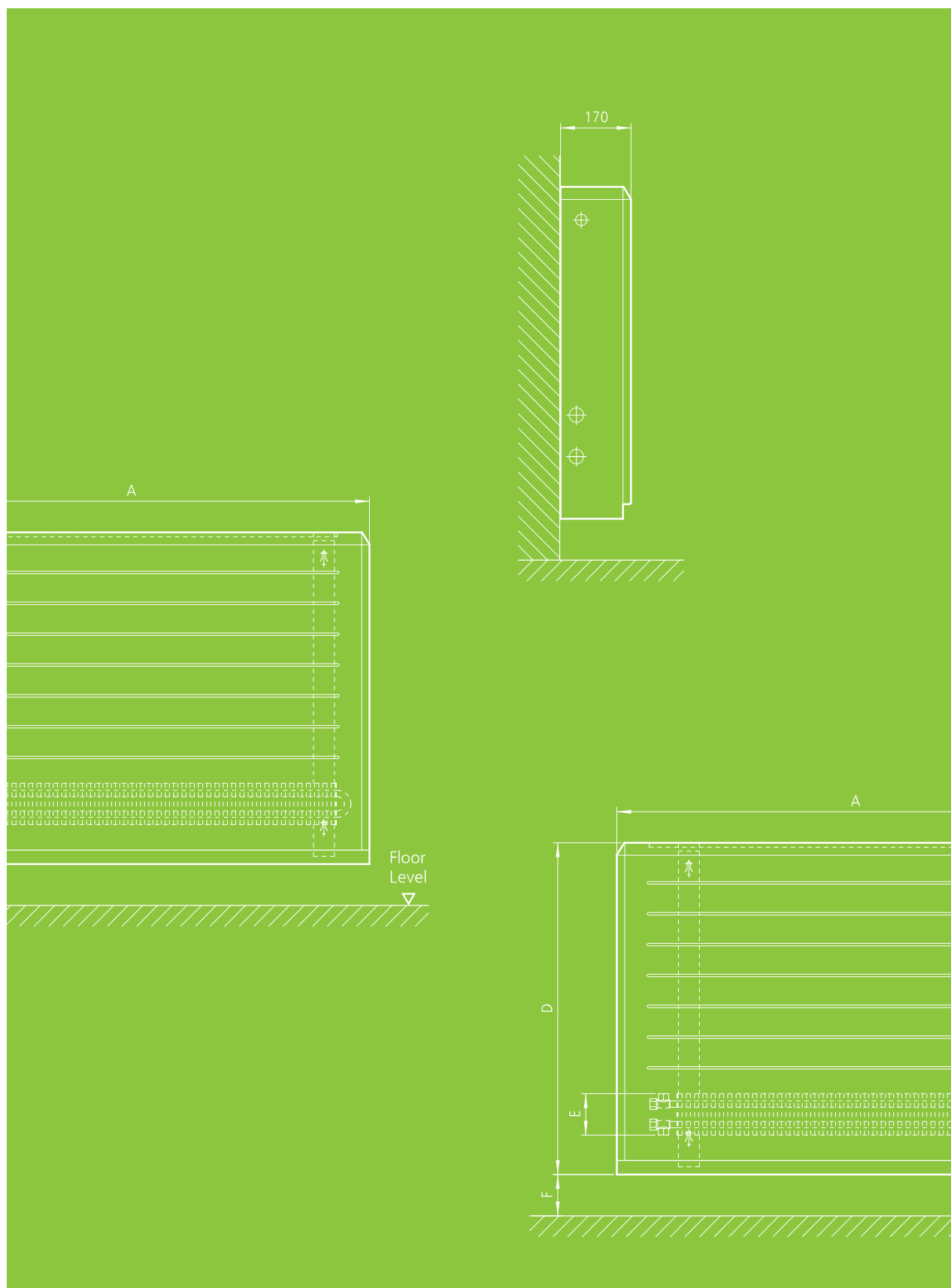
Features:





- 1 PowerKon convector**
 - › with bidirectional connections
- 2 Pipework cover**
 - › for all wall models, supplied by others
- 3 Air guidance**
 - › for all front grille models
- 4 Protection air inlet grille**
 - › for all wall models, comes as standard

02 ▶ Technical data



Advice on measuring conditions

Heat outputs

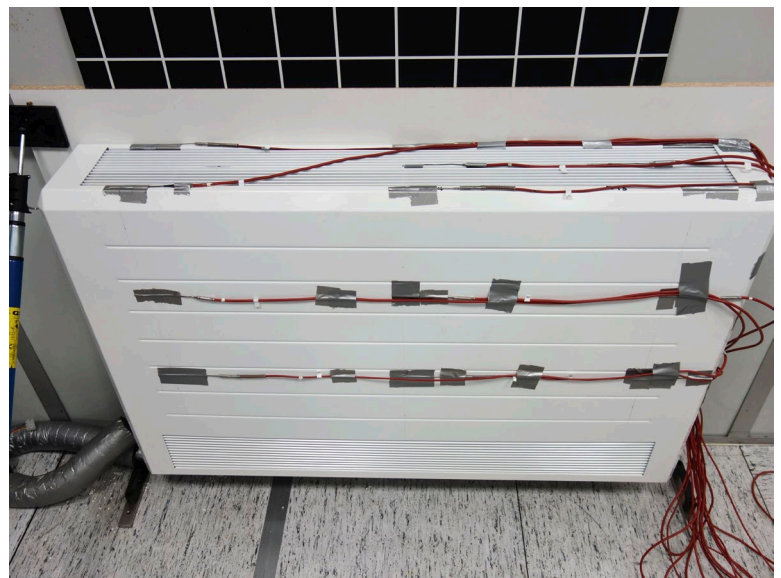
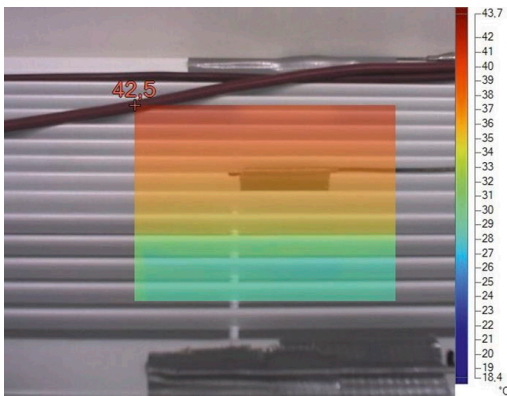
The heat outputs were measured in accordance with BS EN 442 „Radiators and Convectors“.

The standard regulates the performance measurements specifically of convectors.

Part 1 „Technical Specification and Requirements“

Part 2 „Test Procedure and Performance data“

The reference/air temperature is measured in the centre of the test chamber (2 metres from the external wall) at a height of 0.75 metres). The surface temperature is measured in line with the NHS DN4 requirements to not exceed 43 °C.

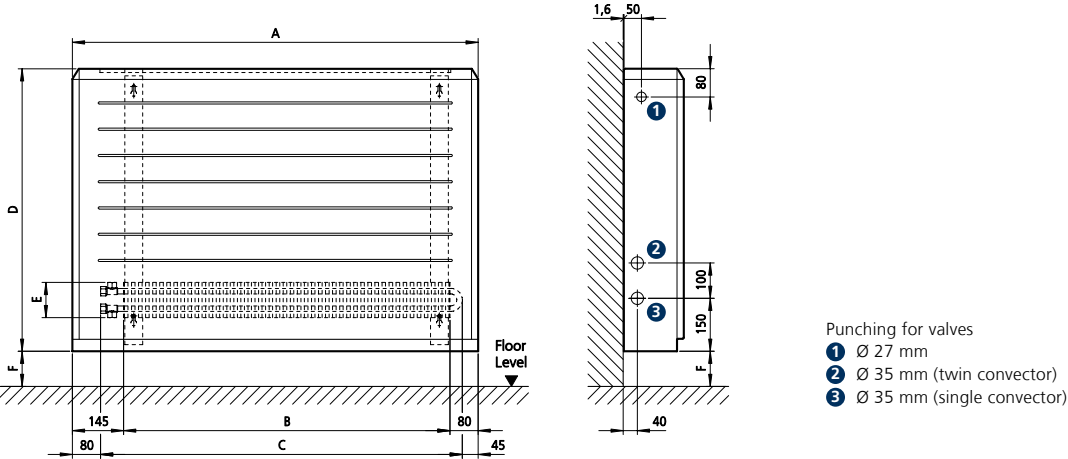


Test setup

PowerKon + ST

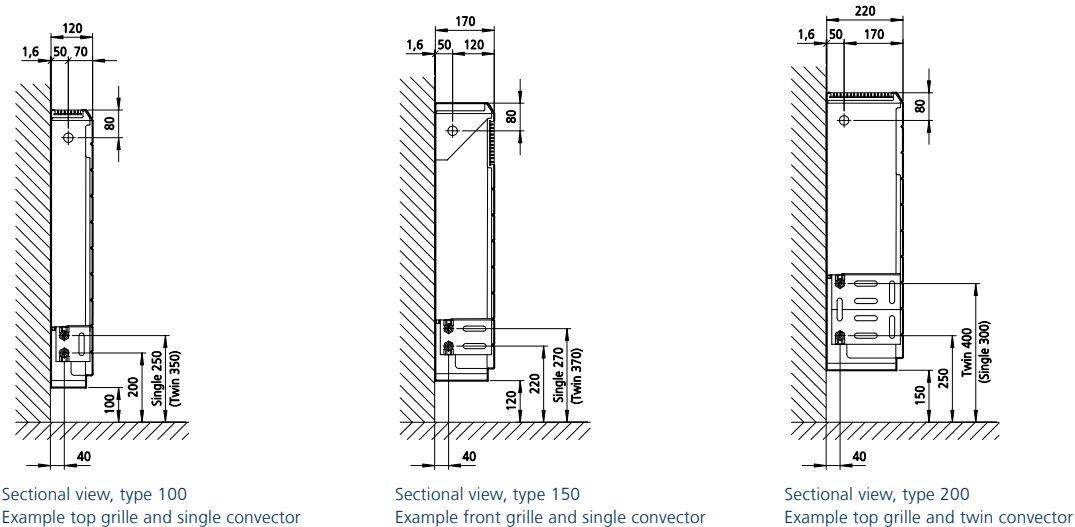
wall mounted, Model WTG & WFG

Technical drawings (dimensions in mm)



Front view
Example top grille and single convector

Side view



Casing length A	Finned length B	Convactor length C
[mm]	[mm]	[mm]
650	425	525
850	625	725
1050	825	925
1250	1025	1125
1450	1225	1325
1650	1425	1525
1850	1625	1725
2050	1825	1925

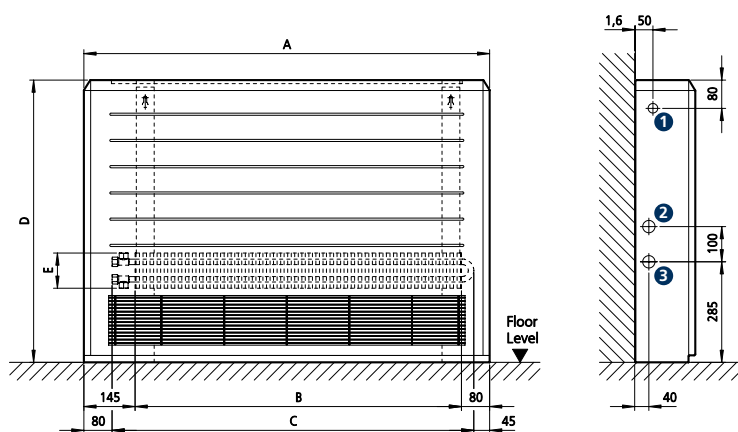
Casing height D	Convactor height E
[mm]	[mm]
500	100 (single)
650	200 (twin)
800	

Casing depth	Distance to floor level F
[mm]	[mm]
120	100
170	150
220	200

PowerKon + ST

floor mounted, Model FTG & FFG

Technical drawings (dimensions in mm)

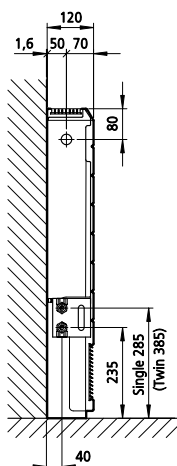


Front view
Example top grille and single convector

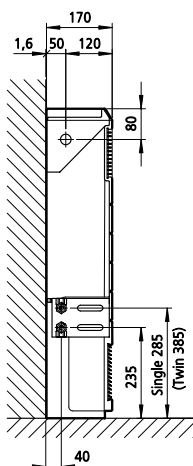
Side view

Punching for valves

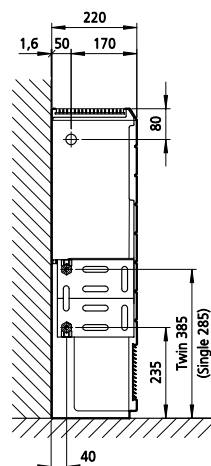
- ① Ø 27 mm
- ② Ø 35 mm (twin convector)
- ③ Ø 35 mm (single convector)



Sectional view, type 100
Example top grille and single convector



Sectional view, type 150
Example front grille and single convector



Sectional view, type 200
Example top grille and twin convector

Casing length A	Finned length B	Convector length C
[mm]	[mm]	[mm]
650	425	525
850	625	725
1050	825	925
1250	1025	1125
1450	1225	1325
1650	1425	1525
1850	1625	1725
2050	1825	1925

Casing height D	Convector height E
[mm]	[mm]
500	100 (single)
650	200 (twin)
800	

Casing depth	Convector depth
[mm]	[mm]
120	100
170	120
220	150

Attention: Type FFG, height 500mm not available with Twin convector!

Performance PowerKon + ST, Model WTG, WFG, FTG, FFG

Casing height 500 mm



Casing length	Convector length	Single convector					Twin convector				
		Convector type	WTG ¹⁾	WFG ²⁾	FTG ³⁾	FFG ⁴⁾	Convector type	WTG ¹⁾	WFG ²⁾	FTG ³⁾	FFG ⁴⁾
[mm]	[mm]	Heat outputs ⁵⁾ at LPHW 75/65 °C, ΔT 50 K [W]									
650	525	100S	425	362	413	341	100T	524	425	509	n/a
		150S	673	539	653	508	150T	793	604	769	n/a
		200S	928	686	900	647	200T	1051	737	1020	n/a
850	725	100S	626	532	607	501	100T	771	624	748	n/a
		150S	990	793	960	748	150T	1166	888	1131	n/a
		200S	1364	1009	1323	951	200T	1546	1084	1499	n/a
1050	925	100S	826	702	801	662	100T	1018	824	988	n/a
		150S	1307	1047	1267	987	150T	1539	1172	1492	n/a
		200S	1801	1332	1747	1256	200T	2040	1431	1979	n/a
1250	1125	100S	1026	872	995	822	100T	1265	1024	1227	n/a
		150S	1624	1301	1574	1226	150T	1912	1456	1854	n/a
		200S	2238	1654	2170	1560	200T	2535	1778	2459	n/a
1450	1325	100S	1226	1042	1189	982	100T	1512	1224	1466	n/a
		150S	1940	1555	1882	1465	150T	2285	1740	2216	n/a
		200S	2674	1977	2593	1864	200T	3029	2125	2939	n/a
1650	1525	100S	1426	1213	1384	1143	100T	1758	1424	1706	n/a
		150S	2257	1808	2189	1704	150T	2658	2024	2578	n/a
		200S	3111	2301	3017	2169	200T	3524	2472	3419	n/a
1850	1725	100S	1627	1383	1578	1303	100T	2005	1623	1945	n/a
		150S	2574	2062	2496	1944	150T	3031	2308	2940	n/a
		200S	3547	2624	3440	2473	200T	4019	2819	3898	n/a
2050	1925	100S	1827	1553	1772	1464	100T	2252	1823	2185	n/a
		150S	2891	2316	2803	2183	150T	3404	2592	3301	n/a
		200S	3984	2947	3864	2778	200T	4513	3166	4378	n/a

n/a = not available

¹⁾ model WTG = Wall Top Grille²⁾ Model WFG = Wall Front Grille³⁾ model FTG = Floor Top Grille⁴⁾ model FFG = Floor Front Grille⁵⁾ at room temperature $t_r = 20\text{ °C}$

Performance PowerKon + ST, Model WTG, WFG, FTG, FFG

Casing height 650 mm



Casing length	Convactor length	Single convector					Twin convector				
		Convactor type	WTG ¹⁾	WFG ²⁾	FTG ³⁾	FFG ⁴⁾	Convactor type	WTG ¹⁾	WFG ²⁾	FTG ³⁾	FFG ⁴⁾
[mm]	[mm]	Heat outputs ⁵⁾ at LPHW 75/65 °C, ΔT 50 K [W]									
650	525	100S	467	418	453	394	100T	576	491	558	463
		150S	739	624	716	588	150T	870	698	844	657
		200S	1018	794	987	748	200T	1154	853	1119	804
850	725	100S	687	615	666	580	100T	848	723	821	681
		150S	1087	918	1053	864	150T	1280	1027	1241	967
		200S	1498	1168	1452	1100	200T	1697	1254	1645	1182
1050	925	100S	907	812	879	766	100T	1119	954	1084	899
		150S	1435	1211	1390	1141	150T	1690	1355	1638	1276
		200S	1977	1541	1916	1452	200T	2240	1656	2171	1560
1250	1125	100S	1126	1009	1092	951	100T	1390	1185	1347	1117
		150S	1782	1505	1727	1418	150T	2099	1684	2035	1586
		200S	2456	1915	2381	1804	200T	2783	2057	2698	1938
1450	1325	100S	1346	1205	1305	1137	100T	1661	1416	1610	1335
		150S	2130	1798	2064	1694	150T	2509	2013	2432	1895
		200S	2935	2288	2846	2156	200T	3326	2459	3224	2316
1650	1525	100S	1566	1402	1518	1322	100T	1932	1647	1872	1553
		150S	2478	2092	2401	1971	150T	2918	2341	2829	2204
		200S	3414	2662	3310	2508	200T	3869	2860	3751	2695
1850	1725	100S	1786	1599	1731	1508	100T	2204	1879	2135	1771
		150S	2826	2386	2738	2247	150T	3328	2670	3226	2514
		200S	3894	3036	3775	2860	200T	4412	3261	4277	3073
2050	1925	100S	2006	1796	1944	1694	100T	2475	2110	2398	1989
		150S	3174	2679	3075	2524	150T	3738	2998	3623	2823
		200S	4373	3409	4239	3212	200T	4955	3663	4803	3451

¹⁾ model WTG = Wall Top Grille
²⁾ model WFG = Wall Front Grille
³⁾ model FTG = Floor Top Grille
⁴⁾ model FFG = Floor Front Grille
⁵⁾ at room temperature $t_L = 20\text{ °C}$

Performance PowerKon + ST, Model WTG, WFG, FTG, FFG

Casing height 800 mm



Casing length	Convector length	Single convector					Twin convector				
		Convector type	WTG ¹⁾	WFG ²⁾	FTG ³⁾	FFG ⁴⁾	Convector type	WTG ¹⁾	WFG ²⁾	FTG ³⁾	FFG ⁴⁾
[mm]	[mm]	Heat outputs ⁵⁾ at LPHW 75/65 °C, ΔT 50 K [W]									
650	525	100S	496	452	482	426	100T	612	531	594	501
		150S	786	674	762	636	150T	926	755	896	712
		200S	1083	859	1050	809	200T	1227	922	1190	869
850	725	100S	730	665	708	627	100T	901	781	873	736
		150S	1156	992	1120	935	150T	1362	1110	1318	1047
		200S	1593	1263	1544	1189	200T	1804	1356	1749	1278
1050	925	100S	964	878	935	827	100T	1189	1031	1153	972
		150S	1525	1309	1478	1234	150T	1798	1465	1740	1382
		200S	2102	1667	2038	1570	200T	2382	1790	2309	1686
1250	1125	100S	1197	1091	1161	1028	100T	1477	1281	1432	1207
		150S	1895	1627	1837	1533	150T	2233	1820	2165	1717
		200S	2612	2071	2532	1951	200T	2959	2224	2869	2095
1450	1325	100S	1431	1303	1388	1229	100T	1765	1531	1711	1443
		150S	2265	1944	2195	1833	150T	2669	2176	2587	2052
		200S	3121	2475	3026	2331	200T	3537	2658	3429	2504
1650	1525	100S	1664	1516	1615	1429	100T	2053	1781	1991	1679
		150S	2635	2261	2554	2132	150T	3105	2531	3010	2387
		200S	3631	2879	3520	2712	200T	4114	3092	3989	2913
1850	1725	100S	1898	1729	1841	1630	100T	2342	2031	2270	1914
		150S	3005	2579	2912	2431	150T	3541	2886	3432	2722
		200S	4141	3283	4014	3092	200T	4691	3526	4548	3322
2050	1925	100S	2132	1942	2068	1830	100T	2630	2281	2550	2150
		150S	3374	2896	3270	2730	150T	3977	3241	3854	3057
		200S	4650	3687	4508	3473	200T	5269	3960	5108	3730

¹⁾ model WTG = Wall Top Grille

²⁾ model WFG = Wall Front Grille

³⁾ model FTG = Floor Top Grille

⁴⁾ model FFG = Floor Front Grille

⁵⁾ at room temperature $t_r = 20\text{ °C}$

Performance PowerKon + ST, Model WTG, WFG, FTG, FFG

Dry weights and Water contents per metre of casing

Convector type	Model WTG ¹⁾			Model WFG ²⁾			Model FTG ³⁾			Model FFG ⁴⁾			Water Content
	Casing height			Casing height			Casing height			Casing height			
	[mm]	[mm]	[mm]	[mm]	[mm]	[mm]	[mm]	[mm]	[mm]	[mm]	[mm]	[mm]	[l/m]
	500	650	800	500	650	800	500	650	800	500	650	800	
100S	14.41	17.15	19.90	15.47	18.22	20.95	11.71	14.50	17.30	13.98	16.78	19.58	0.65
150S	17.79	20.89	23.99	19.81	22.90	26.01	14.41	17.59	20.77	17.64	20.82	24.00	0.97
200S	21.18	24.63	28.10	23.73	27.18	30.64	17.12	20.68	24.24	20.88	24.44	28.01	1.31
100T	16.45	19.19	21.94	17.51	20.26	22.99	13.75	16.54	19.34	n/a	18.82	21.62	1.31
150T	20.85	23.94	27.05	22.86	25.96	29.06	17.46	20.65	23.82	n/a	23.88	27.06	1.95
200T	25.24	28.70	32.16	27.79	31.25	34.70	21.18	24.74	28.30	n/a	28.50	32.07	2.60

Exponent values

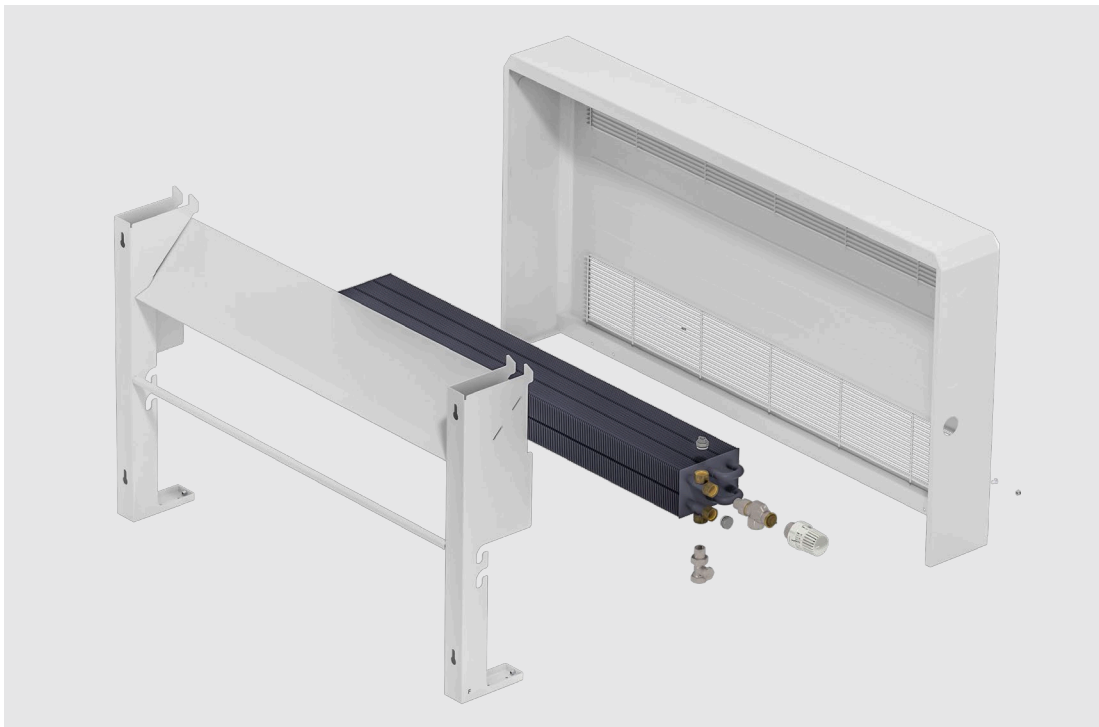
Convactor type	Model WTG ¹⁾			Model WFG ²⁾			Model FTG ³⁾			Model FFG ⁴⁾		
	Casing height			Casing height			Casing height			Casing height		
	[mm]	[mm]	[mm]	[mm]	[mm]	[mm]	[mm]	[mm]	[mm]	[mm]	[mm]	[mm]
	500	650	800	500	650	800	500	650	800	500	650	800
100S	1.3656	1.3380	1.3247	1.4333	1.3559	1.3334	1.3669	1.3392	1.3260	1.4453	1.3673	1.3445
150S	1.3386	1.3115	1.2985	1.4012	1.3255	1.3035	1.3398	1.3127	1.2997	1.4129	1.3366	1.3144
200S	1.3461	1.3188	1.3057	1.4046	1.3287	1.3066	1.3473	1.3200	1.3069	1.4163	1.3398	1.3176
100T	1.5028	1.4725	1.4578	1.5716	1.4867	1.4621	1.5043	1.4738	1.4593	n/a	1.4992	1.4742
150T	1.4731	1.4433	1.4290	1.5364	1.4534	1.4293	1.4744	1.4446	1.4303	n/a	1.4656	1.4412
200T	1.4814	1.4513	1.4369	1.5401	1.4569	1.4327	1.4827	1.4527	1.4382	n/a	1.4691	1.4447

¹⁾ model WTG = Wall Top Grille
²⁾ model WFG = Wall Front Grille
³⁾ model FTG = Floor Top Grille
⁴⁾ model FFG = Floor Front Grille

03 ▶ Design information



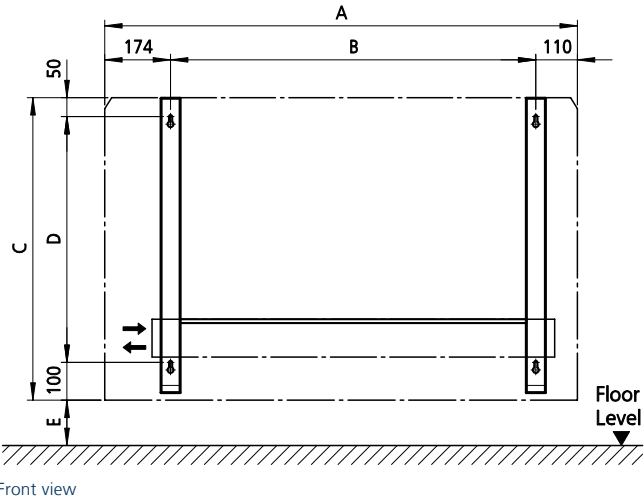
Information on planning and design Model WTG, WFG, FTG, FFG



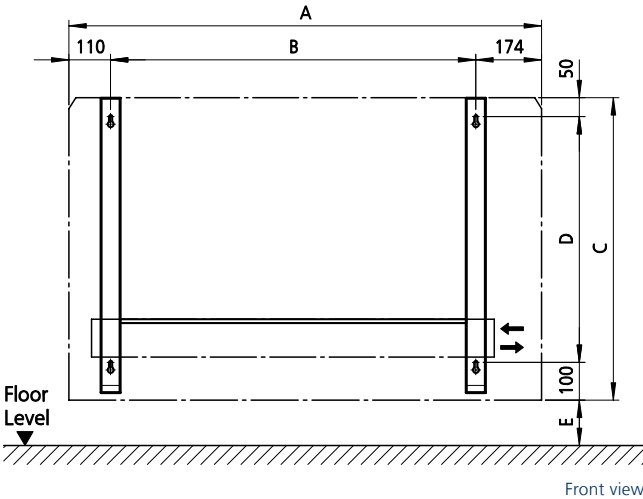
- ▶ low surface temperature convector, compliant with NHS DN4 at ΔT 50K and a maximum flow temperature of 80°C
- ▶ can be installed extremely quickly, thanks to its strong one-piece profiled casing. ½" BSP directional LPHW connections, wall/floor brackets and wall spacer are included
- ▶ strong single piece profiled casing, made of 1.6 mm steel with 3 mm rib details for extra strength and durability
- ▶ WFG completely with air outlet grille at the front and integral bottom grille to prevent convector access, compliant with NHS estates, as well as mounted casing
- ▶ WTG completely with air outlet grille at the top and integral bottom grille to prevent convector access, compliant with NHS estates, as wall mounted casing
- ▶ FFG completely with air inlet and air outlet grille at the front as floor standing casing
- ▶ FTG completely with air inlet at the front plus air outlet grille at the top as floor standing casing.
- ▶ air outlet grille as pencil proof linear bar grille with max. 7.1 mm bar spacing
- ▶ completely with all brackets and wall spacer.
- ▶ security screw locking system to fix casing onto bracketry to prevent unauthorized access
- ▶ casing and bracketry with scratch resistant and anti bacterial epoxy powder coating, colour finish, RAL 9016, pure white
- ▶ no handed unit with knockouts for valve accessory to allow handing lhs and rhs
- ▶ 10 years warranty on the casing, 30 years warranty on the convector

Installation, bracket fixing detail, Model WTG, WFG, FTG, FFG

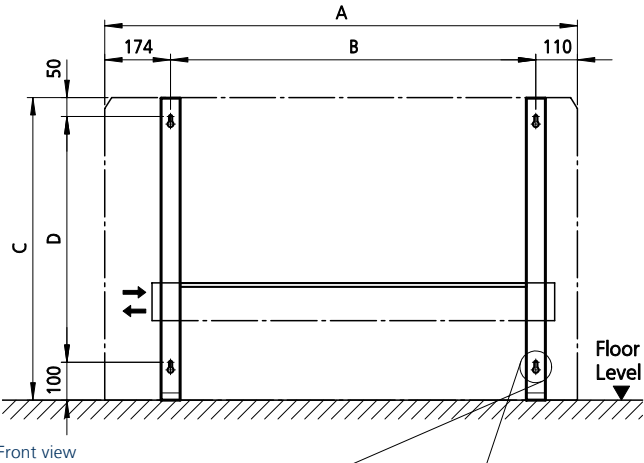
Wall mounted, LH valve position



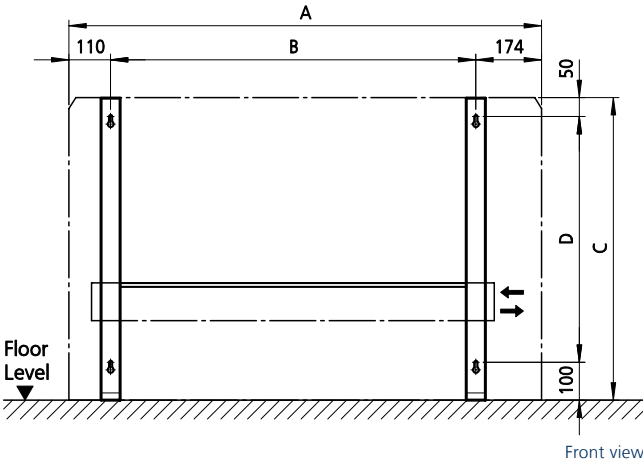
Wall mounted, RH valve position



Floor mounted, LH valve position



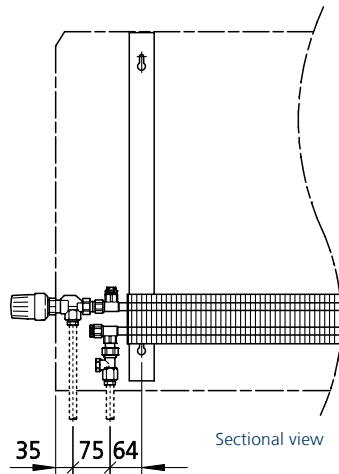
Floor mounted, RH valve position



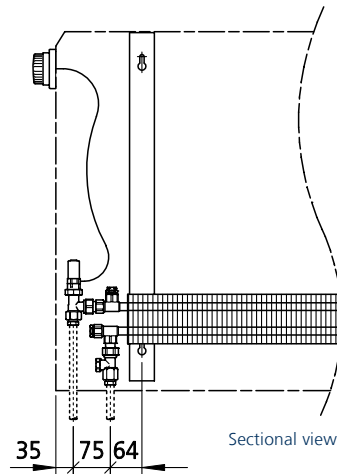
Casing length A	Fixing length B
[mm]	[mm]
650	366
850	566
1050	766
1250	966
1450	1166
1650	1366
1850	1566
2050	1766

Casing height C	Fixing height D	Floor distance E
[mm]	[mm]	[mm]
500	350	100
650	450	120
800	650	150

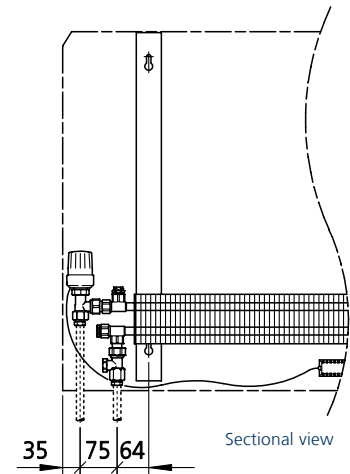
Valve positions, Model WTG, WFG, FTG, FFG



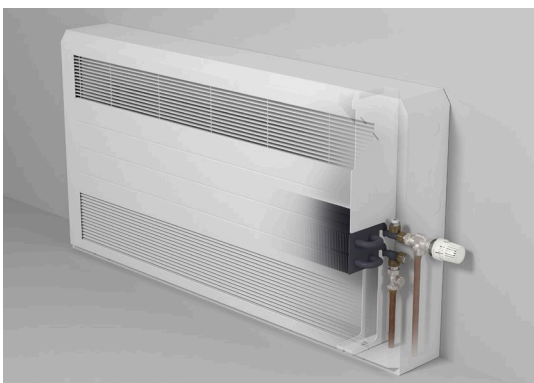
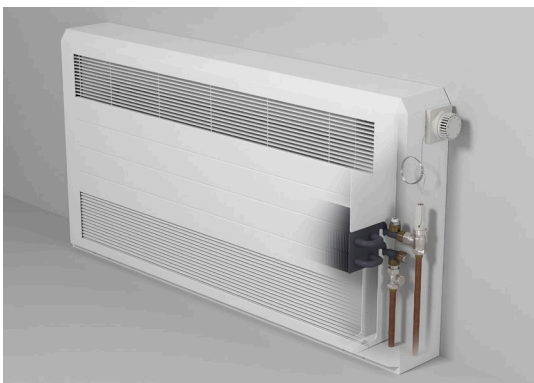
External TRV head



Inbuild TRV head



Tamper proof TRV



Completely with installation kit, including 1/2" BSP air vent, 1/2" BSP blank and all fixing screws and washers.

Complete unit packed into single, strong cardboard packing.

04 ▶ Ordering information

PowerKon + ST Model WTG, WFG, FTG, FFG

Model	Casing height	Casing depth	Casing Lengths	Convector type	Art.no.
	[mm]	[mm]	[mm]		
WTG (Wall Top Grille)	500 = 500 mm 650 = 650 mm 800 = 800 mm	12 = 120 mm 17 = 170 mm 22 = 220 mm	065 = 650 mm 085 = 850 mm 105 = 1050 mm 125 = 1250 mm 145 = 1450 mm 165 = 1650 mm 185 = 1850 mm 205 = 2050 mm	1 = Single convector 2 = Twin convector	1261 -----
WFG (Wall Front Grille)	500 = 500 mm 650 = 650 mm 800 = 800 mm	12 = 120 mm 17 = 170 mm 22 = 220 mm	065 = 650 mm 085 = 850 mm 105 = 1050 mm 125 = 1250 mm 145 = 1450 mm 165 = 1650 mm 185 = 1850 mm 205 = 2050 mm	1 = Single convector 2 = Twin convector	1262 -----
FTG (Floor Top Grille)	500 = 500 mm 650 = 650 mm 800 = 800 mm	12 = 120 mm 17 = 170 mm 22 = 220 mm	065 = 650 mm 085 = 850 mm 105 = 1050 mm 125 = 1250 mm 145 = 1450 mm 165 = 1650 mm 185 = 1850 mm 205 = 2050 mm	1 = Single convector 2 = Twin convector	1263 -----
FFG (Floor Front Grille)	500 = 500 mm* 650 = 650 mm 800 = 800 mm	12 = 120 mm 17 = 170 mm 22 = 220 mm	065 = 650 mm 085 = 850 mm 105 = 1050 mm 125 = 1250 mm 145 = 1450 mm 165 = 1650 mm 185 = 1850 mm 205 = 2050 mm	1 = Single convector 2 = Twin convector	1264 -----



Article key for wall mounted/floor mounted units (Example of art. no.)

126

1

2

065

12

50

1

2

3

4

1

2

065

12

50

1

2

3

4

Single convector

Twin convector

Length (example)

Depth (example)

Height (example)

WTG Wall Top Grille

WFG Wall Front Grille

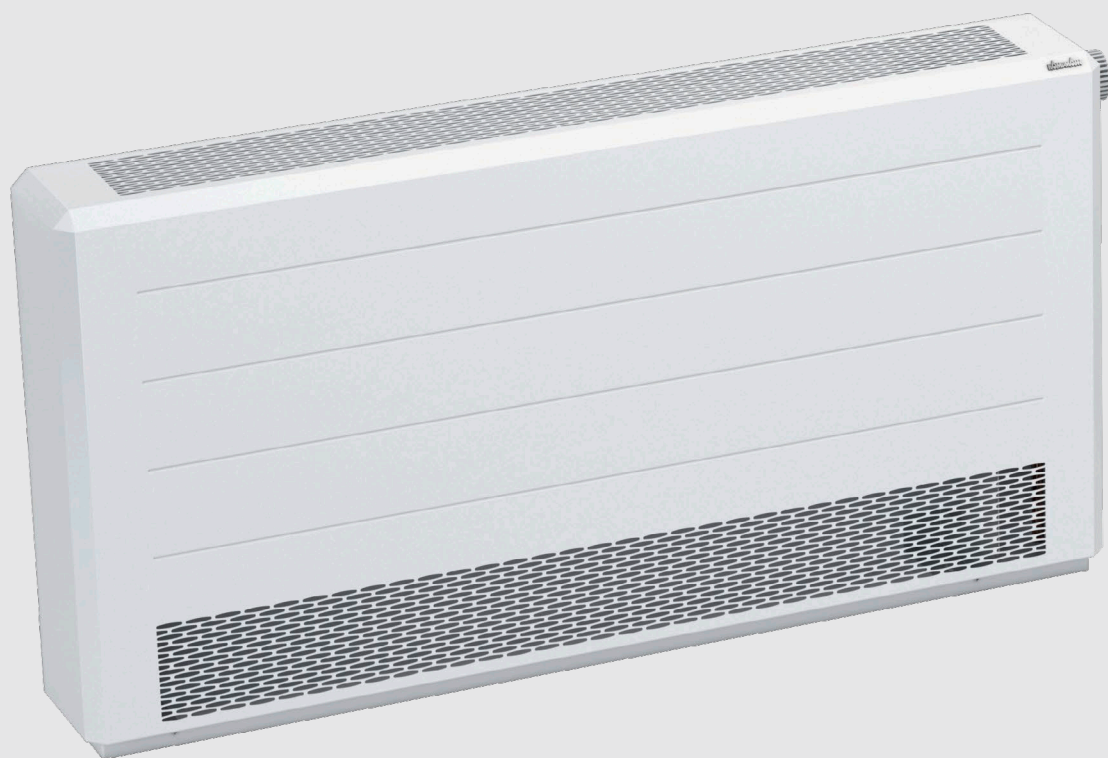
FTG Floor Top Grille

FFG Floor Front Grille

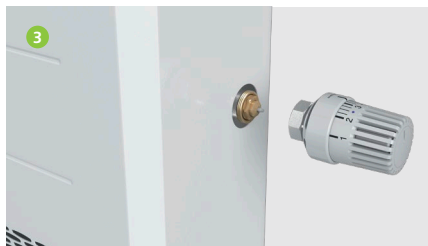
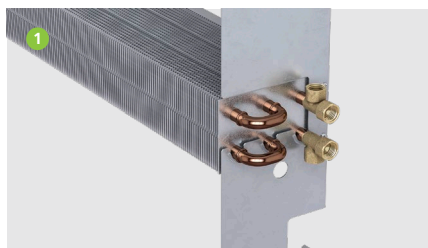
* n/a for twin convector

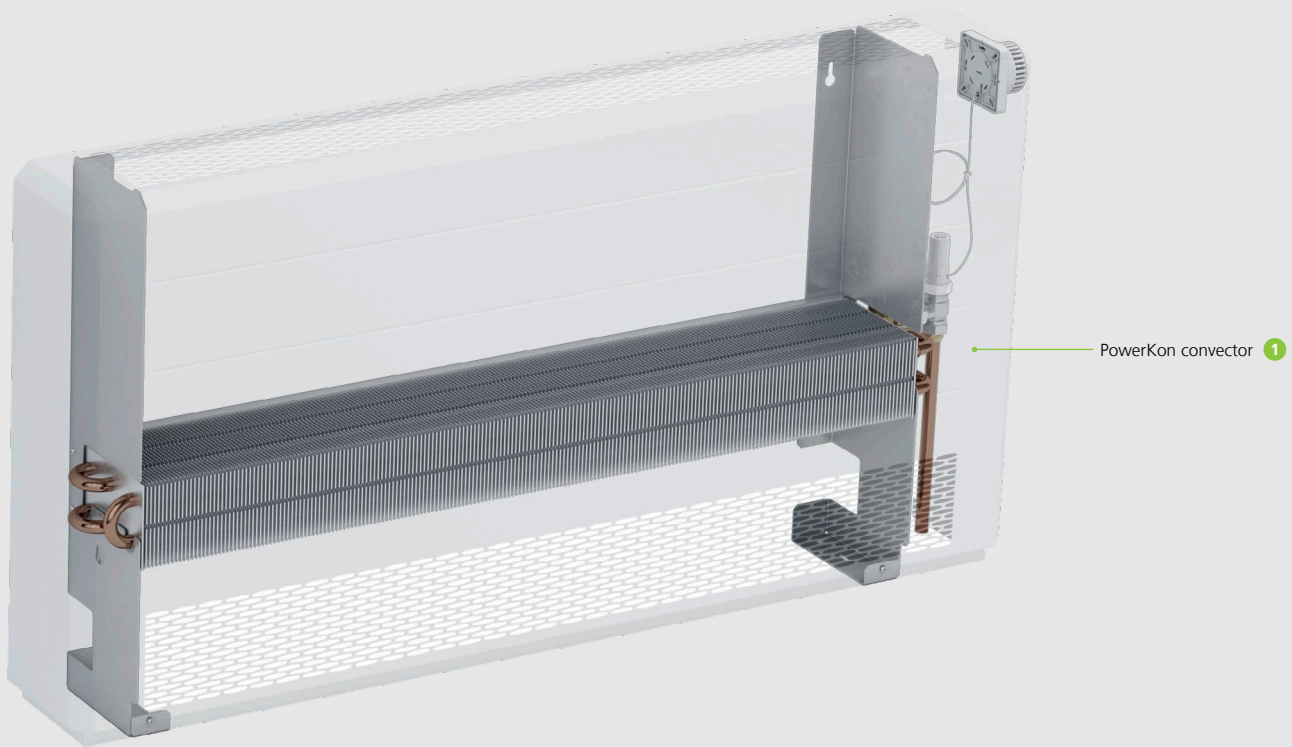
PowerKon + ST at a glance

Model FTGplus



Features:

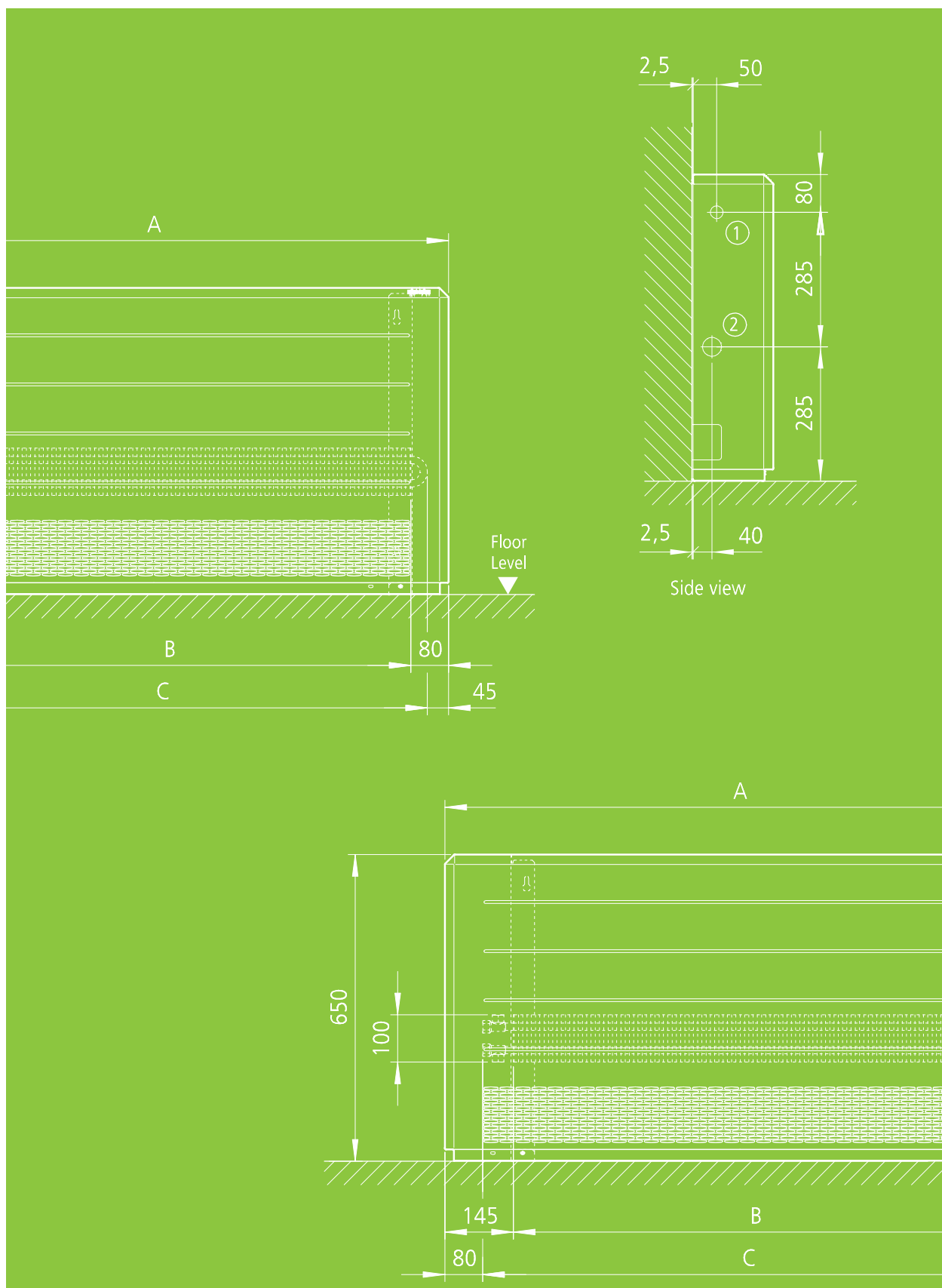




Example: PowerKon FTGplus with Single convector

- 1 **PowerKon convector**
 - › with bidirectional connections
- 2 **Perforated air inlet/outlet**
 - › Perforated air inlet and outlet as pencil proof oval form grille
- 3 **Valve knock-outs**
 - › Bidirectional valve knock-outs on the side
- 4 **Pipework knock-outs**
 - › Bidirectional pipework knock-outs on the side
- 5 **Additional bracket**
 - › Additional third bracket for the casing lengths 1650 / 1850 / 2050 mm

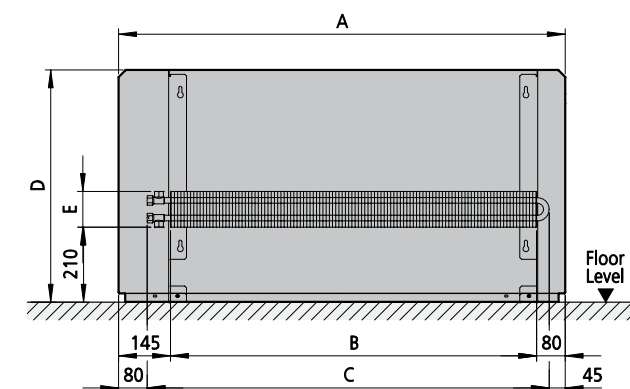
02 ▶ Technical data



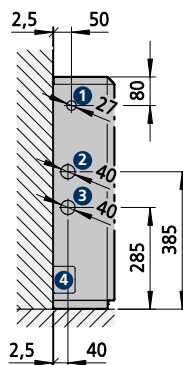
PowerKon + ST

floor mounted, Model FTGplus

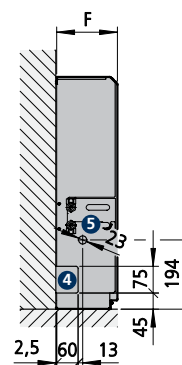
Technical drawings (dimensions in mm)



Sectional front view



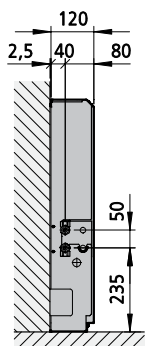
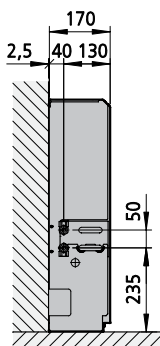
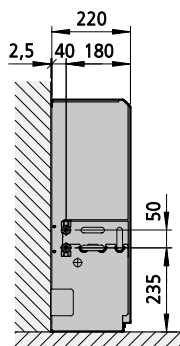
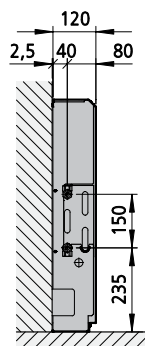
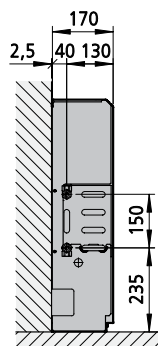
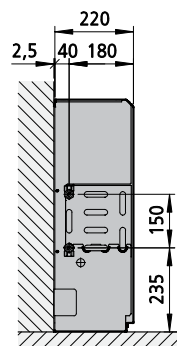
Side view



Sectional side view

Punching for valves

- ① Ø 27 mm, Knock-out for Inbuild TRV Head
- ② Ø 40 mm, Valve knock-out for External TRV Head, Twin convector
- ③ Ø 40 mm, Valve knock-out for External TRV Head, Single convector
- ④ Pipework knock-out
- ⑤ 23 mm, Knock-out for Capillary Tamper proof TRV

Sectional view
single convector,
type 100Sectional view
single convector,
type 150Sectional view
single convector,
type 200Sectional view
twin convector,
type 100Sectional view
twin convector,
type 150Sectional view
twin convector,
type 200

Casing length A	Finned length B	Convector length C
[mm]	[mm]	[mm]
650	425	525
850	625	725
1050	825	925
1250	1025	1125
1450	1225	1325
1650	1425	1525
1850	1625	1725
2050	1825	1925

Casing height D	Convector height E
[mm]	[mm]
500	100 (single)
650	200 (twin)
800	

Casing depth	Convector depth
[mm]	[mm]
120	100
170	120
220	150

Performance PowerKon + ST, Model FTGplus



Casing length	Convactor length	Single convactor				Twin convactor			
		Convactor type ³⁾	Casing height FTGplus ¹⁾			Convactor type ³⁾	Casing height FTGplus ¹⁾		
			500	650	800		500	650	800
[mm]	[mm]		[mm]	[mm]	[mm]		[mm]	[mm]	[mm]
Heat outputs ²⁾ at LPHW 75/65 °C, ΔT 50 K [W]									
650	525	100S	413	453	482	100T	509	558	594
		150S	653	716	762	150T	769	844	896
		200S	900	987	1050	200T	1020	1119	1190
850	725	100S	607	666	708	100T	748	821	873
		150S	960	1053	1120	150T	1131	1241	1318
		200S	1323	1452	1544	200T	1499	1645	1749
1050	925	100S	801	879	935	100T	988	1084	1153
		150S	1267	1390	1478	150T	1492	1638	1740
		200S	1747	1916	2038	200T	1979	2171	2309
1250	1125	100S	995	1092	1161	100T	1227	1347	1432
		150S	1574	1727	1837	150T	1854	2035	2165
		200S	2170	2381	2532	200T	2459	2698	2869
1450	1325	100S	1189	1305	1388	100T	1466	1610	1711
		150S	1882	2064	2195	150T	2216	2432	2587
		200S	2593	2846	3026	200T	2939	3224	3429
1650	1525	100S	1384	1518	1615	100T	1706	1872	1991
		150S	2189	2401	2554	150T	2578	2829	3010
		200S	3017	3310	3520	200T	3419	3751	3989
1850	1725	100S	1578	1731	1841	100T	1945	2135	2270
		150S	2496	2738	2912	150T	2940	3226	3432
		200S	3440	3775	4014	200T	3898	4277	4548
2050	1925	100S	1772	1944	2068	100T	2185	2398	2550
		150S	2803	3075	3270	150T	3301	3623	3854
		200S	3864	4239	4508	200T	4378	4803	5108

Dry weights and Water contents per metre of casing

Convector type ³⁾	Model FTGplus ¹⁾			Water Content
	Casing height			
	500	650	800	
	[mm]	[mm]	[mm]	[l/m]
100S	11.71	14.50	17.30	0.65
150S	14.41	17.59	20.77	0.97
200S	17.12	20.68	24.24	1.31
100T	13.75	16.54	19.34	1.31
150T	17.46	20.65	23.82	1.95
200T	21.18	24.74	28.30	2.60

Exponent values

Convactor type ³⁾	Model FTGplus ¹⁾		
	Casing height		
	500	650	800
	[mm]	[mm]	[mm]
100S	1.3669	1.3392	1.3260
150S	1.3398	1.3127	1.2997
200S	1.3473	1.3200	1.3069
100T	1.5043	1.4738	1.4593
150T	1.4744	1.4446	1.4303
200T	1.4827	1.4527	1.4382

¹⁾ model FTGplus = Floor Top Grille

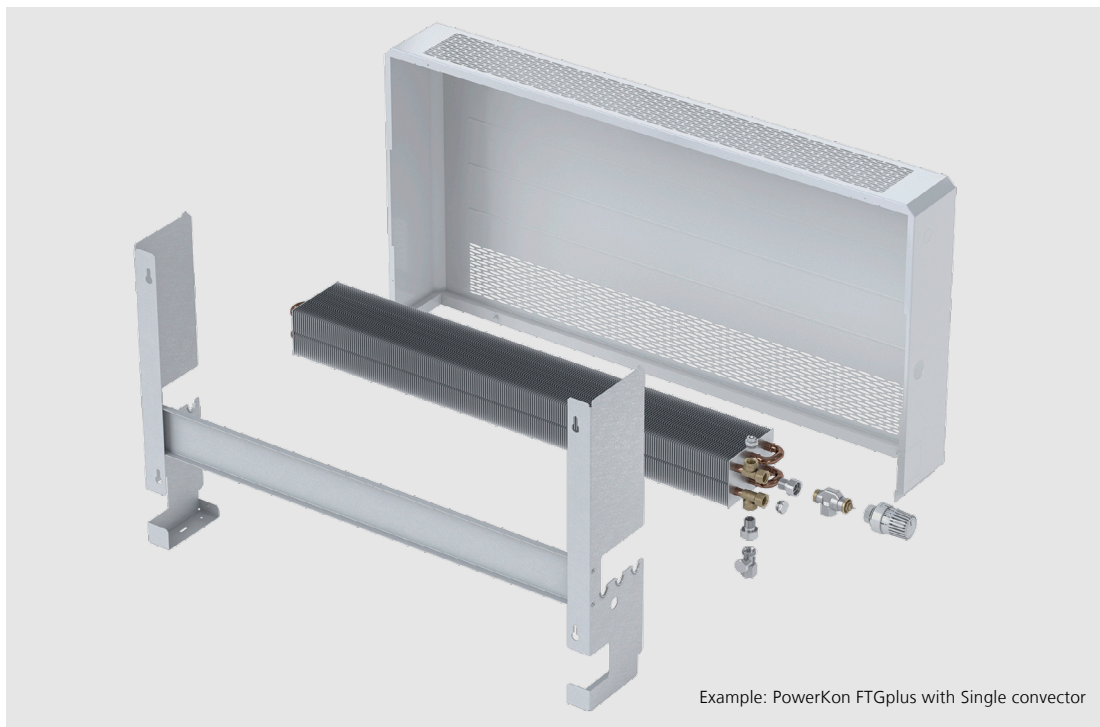
²⁾ at room temperature t_L = 20°C

³⁾ S = Single convactor; T = Twin convactor

03 ▶ Design information



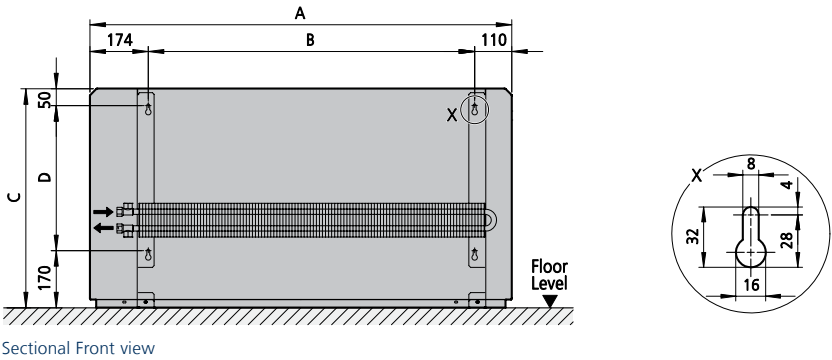
Information on planning and design Model FTGplus



- ▶ low surface temperature convector, compliant with NHS DN4 at deltaT 50K and a maximum flow temperature of 80°C
- ▶ can be installed extremely quickly, thanks to its strong one-piece profiled casing. ½" BSP directional LPHW connections, wall brackets and wall spacer are included
- ▶ strong single piece profiled casing, made of 1.25 mm steel with 3 mm rib details for extra strenght and durability
- ▶ FTGplus completely with perforated air inlet at the front perforated plus air outlet at the top as floor standing casing.
- ▶ perforated air inlet/outlet as pencil proof oval grille with max. 6.0 mm bar spacing
- ▶ completely with all brackets and wall spacer.
- ▶ security screw locking system to fix casing onto backetry to prevent unauthorized access
- ▶ casing and bracketry with scratch resistant and anti bacterial epoxy powder coating, colour finish, RAL 9016, pure white
- ▶ no handed unit with knockouts fo valve accessory to allow handing lhs and rhs
- ▶ 10 years warranty on the casing, 30 years warranty on the convector

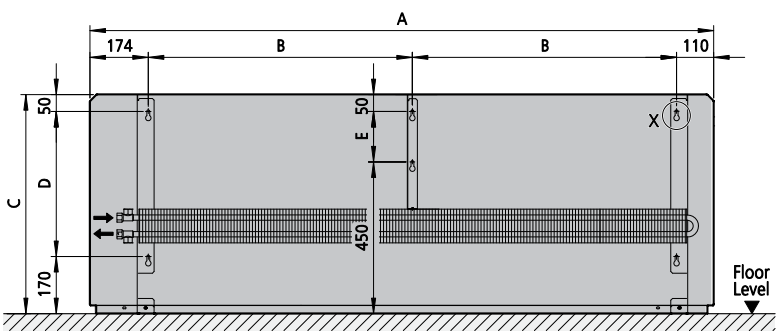
Installation, bracket fixing detail, Model FTGplus

LH valve position casing length 650 - 1450 mm



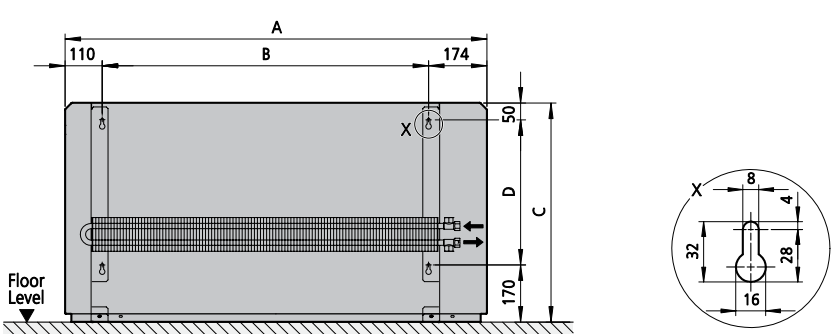
Sectional Front view

LH valve position casing length 1650 - 2050 mm



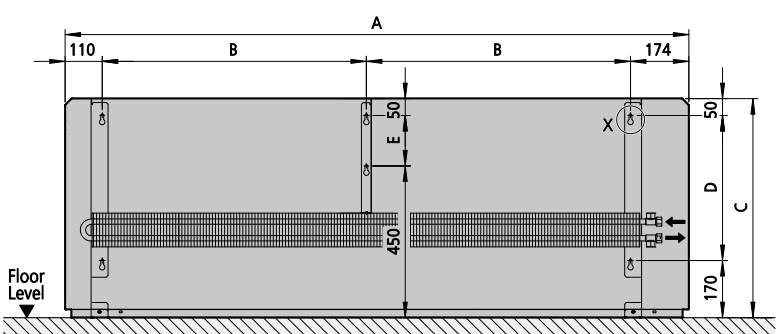
Sectional Front view

RH valve position casing length 650 - 1450 mm



Sectional Front view

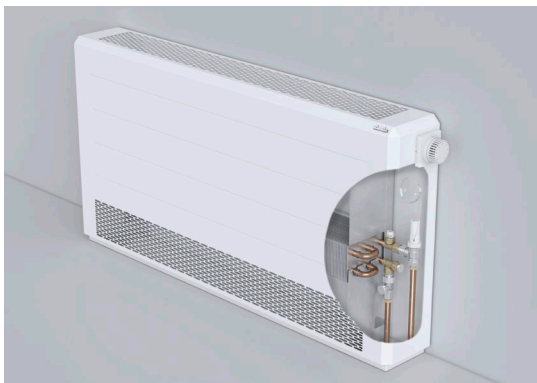
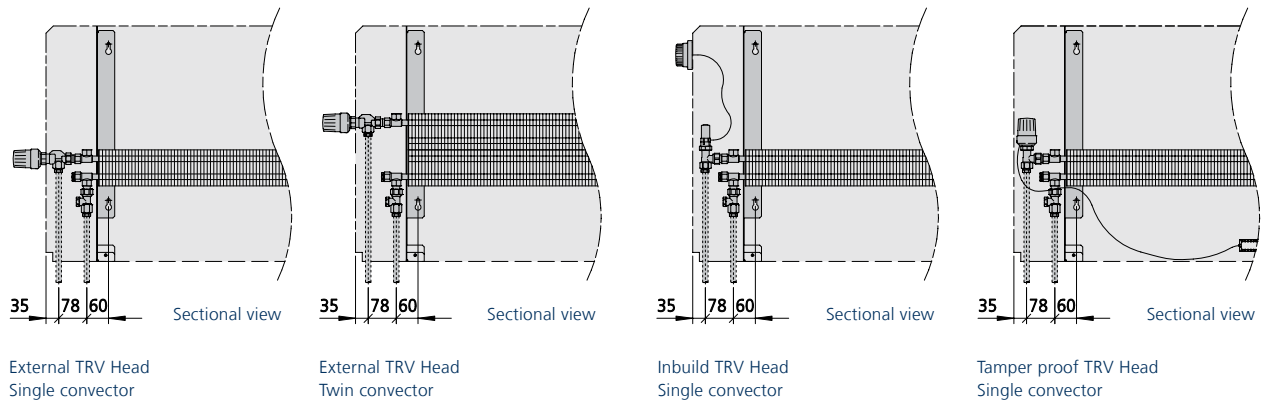
RH valve position casing length 1650 - 2050 mm



Sectional Front view

Casing length A	Fixing length B	Casing height C	Casing height D	Fixing height E
[mm]	[mm]	[mm]	[mm]	[mm]
650	366	500	280	-
850	566	650	430	150
1050	766	800	580	300
1250	966			
1450	1166			
1650	683			
1850	783			
2050	883			

Valve positions, Model FTGplus



Completely with installation kit, including 1/2" BSP air vent, 1/2" BSP blank and all fixing screws and washers.

Complete unit packed into single, strong cardboard packing.

04 ▶ Ordering information

PowerKon + ST Model FTGplus

Model	Casing height	Casing depth	Casing Lenghts	Convector type	Art.no.
	[mm]	[mm]	[mm]		
FTGplus (Floor Top Grille)	500 = 500 mm 650 = 650 mm 800 = 800 mm	12 = 120 mm 17 = 170 mm 22 = 220 mm	065 = 650 mm 085 = 850 mm 105 = 1050 mm 125 = 1250 mm 145 = 1450 mm 165 = 1650 mm 185 = 1850 mm 205 = 2050 mm	1 = Single convector 2 = Twin convector	1267 -----



Article key for wall mounted/floor mounted units (Example of art. no.)

126

7

065

17

1

Single convector

Lenght (example)

Depth (example)

Height

FTGplus Floor Top Grille

Accessories

Figure	Article	Properties	Suitable for	Art. no.
Valves				
	Valve kit with External TRV Head valve body, return valve and TRV Head	"Valve body, axial form, 1/2" connection, pre-settable, return shut-off valve, straight form, 1/2" connection, TRV Head"	PowerKon + ST	194000126105
	Valve kit with inbuild TRV Head valve body, return valve and TRV Inbuild Head	"Valve body, angled form, 1/2" connection, pre-settable, return shut-off valve, straight form, 1/2" connection, TRV Inbuild Head"	PowerKon + ST	194000126106
	Valve kit with Tamper proof TRV valve body, return valve and Remote TRV	"Valve body, angled form, 1/2" connection, pre-settable, return shut-off valve, straight form, 1/2" connection, Remote TRV"	PowerKon + ST	194000126107

Kampmann.co.uk/powerkon-st

Kampmann UK Ltd.
Dial House, Govett Avenue
Shepperton, Middlesex, TW17 8AG
Great Britain

T +44 (0)1932 228592
F +44 (0)1932 228949
E info@kampmann.co.uk
W Kampmann.co.uk

