

Trench Convector

Katherm QK





Produces an optimum indoor climate

The coordinated interplay of whisper-quiet EC tangential fan and high-output copper-aluminium convector ensures an optimum indoor climate. This produces a high heat output combined with low sound levels.

It's your choice

You have the choice of two widths, twelve lengths, three control options and extensive accessories. With guaranteed EN 16430-compliant outputs.

Advantages 1 | 3



Tailor-made

Your customer gets the thing you appreciate about Kampmann: individual made-to-fit trenches for all façades. Regardless of whether you need mitred corners, curved trenches, column cutouts etc.

With a matching frame

The matching frame for every grille finish – all possible for the Katherm QK. The icing on the cake for a perfect look.

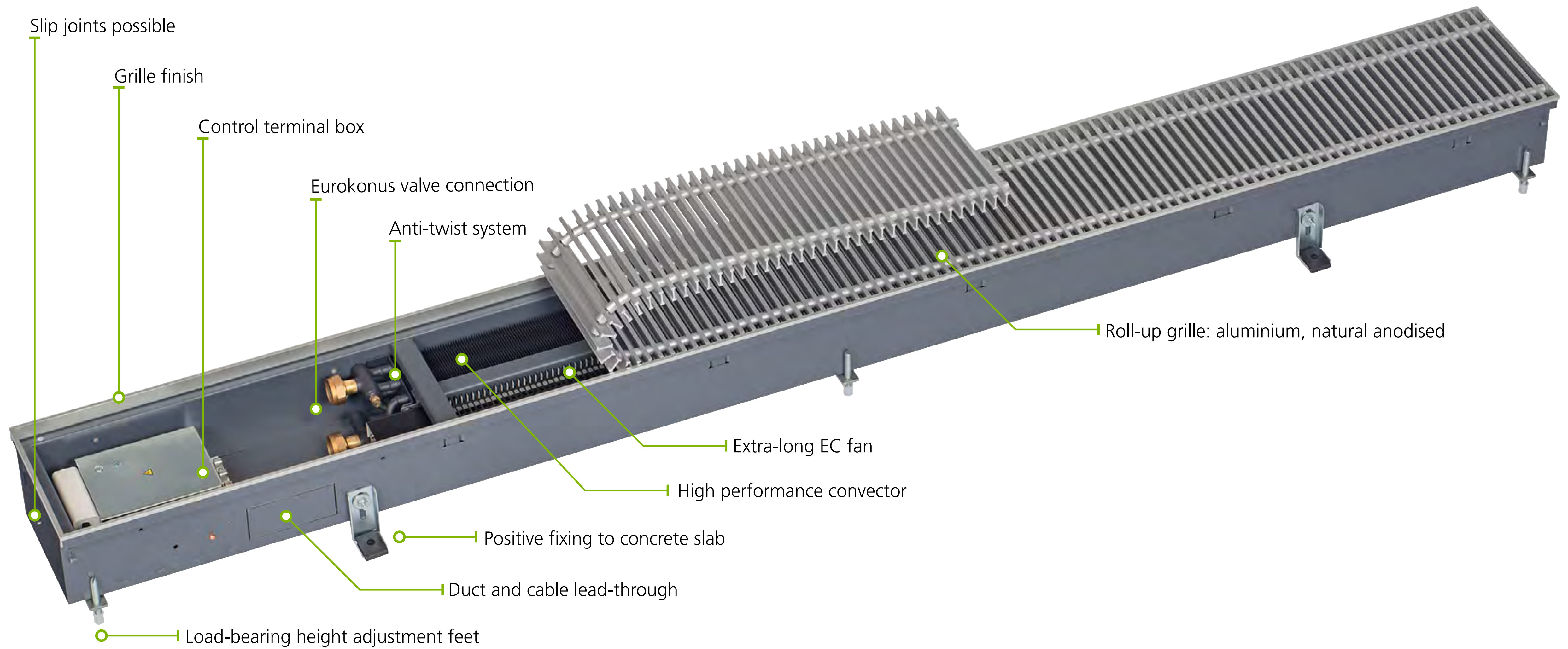


Easy installation

Work on site is far easier with the Eurokonus valve connection. Other standard features, such as height adjustment feet and load-bearing raised floor brackets, reduce installation time and thus also costs.

Design reliably

Design our standard trenches with short delivery times. You can also rely on our support for your individual project to find the respective solution.



Katherm QK at a glance

Slip joints possible

- > to allow continuous grille appearance

Load-bearing height adjustment feet

- > for stable installation within screeded and raised floors
- > standard



Cover plate

- > as visual cover and protection against dirt ingress

Coloured frame

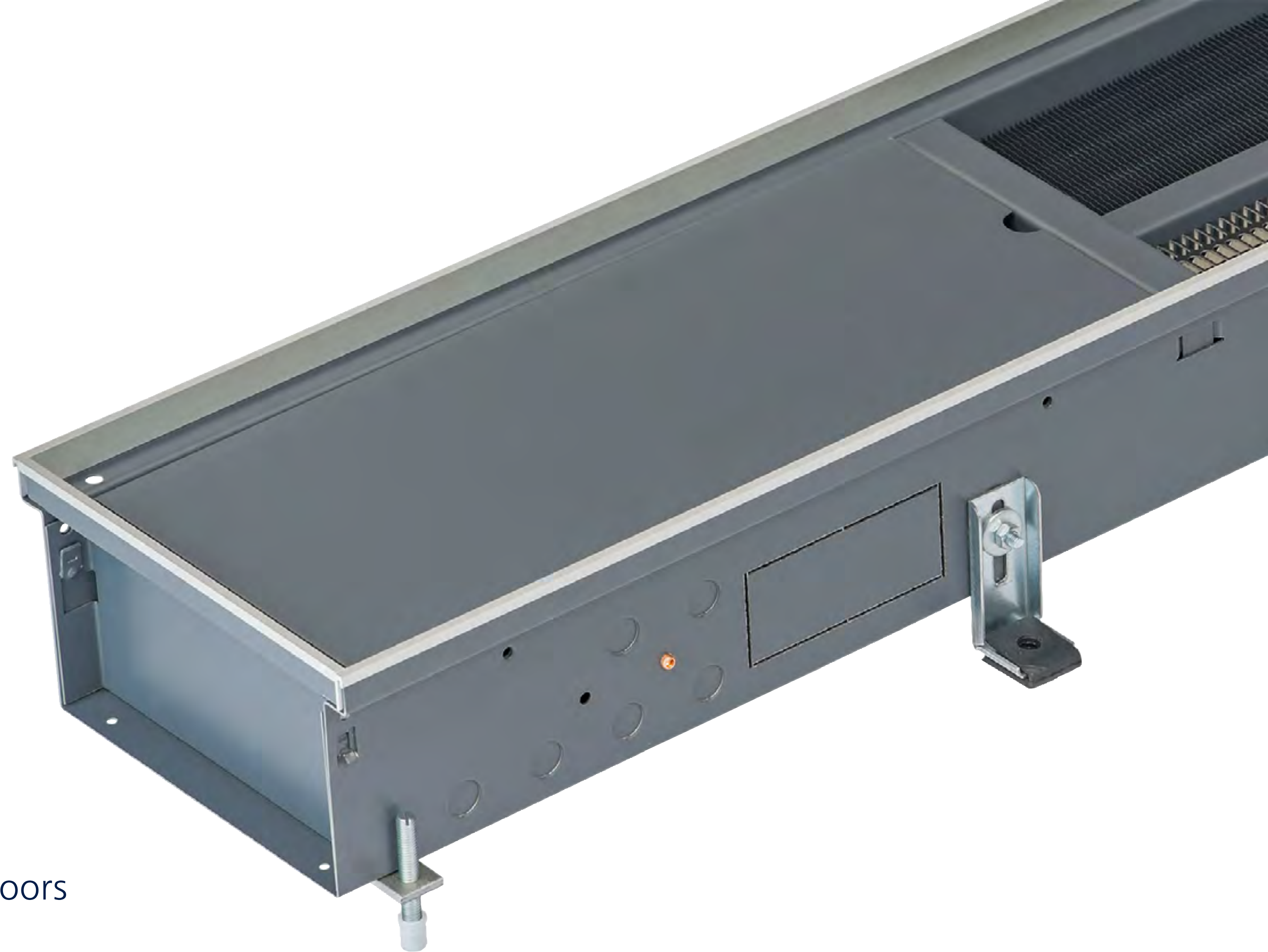
- > to match grille finish

Pipe and cable openings

- > for water and electrical connections
- > punched

Positive fixing to concrete slab

- > for stable installation within screeded and raised floors



High-performance convector

- > a proven combination of copper/aluminium
- > optimised for airflow and heat transfer
- > coated graphite-grey

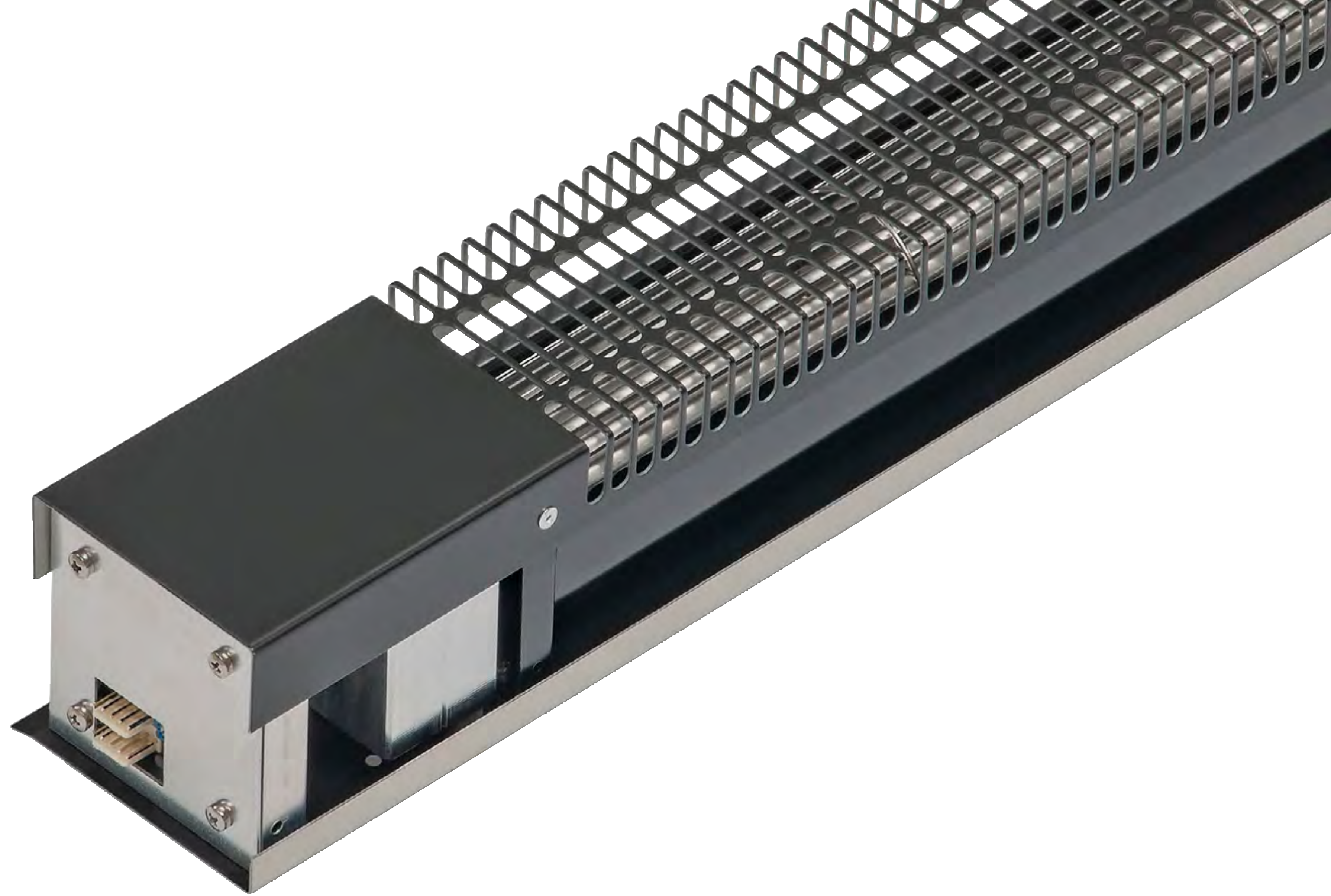
Eurokonus valve connection

- > for easy connection
- > saves installation time
- > NPT adaptors available on request



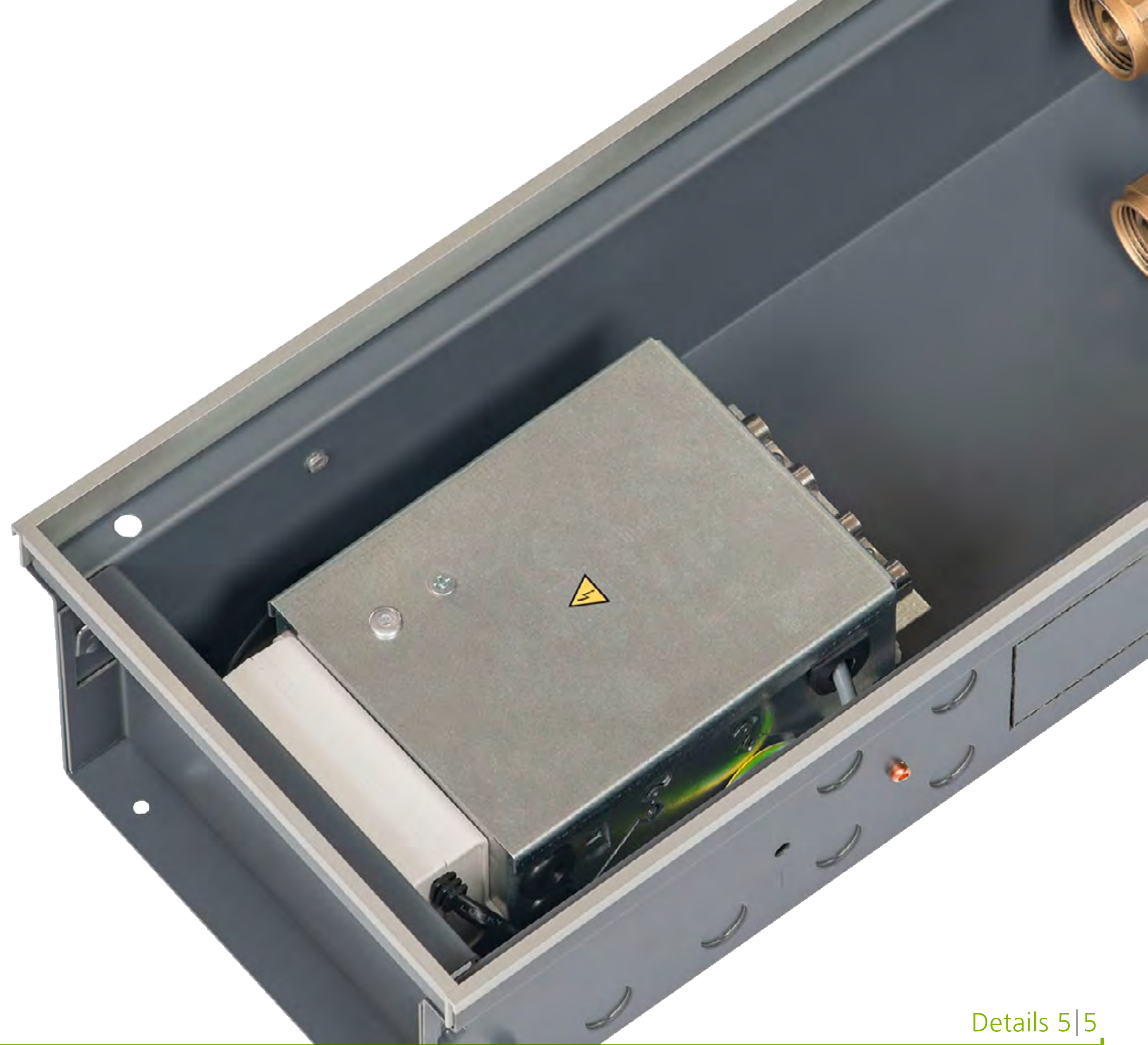
Extra long EC fan

- > for uniform convector airflow
- > resulting in high heat outputs at low sound emissions



Control terminal box

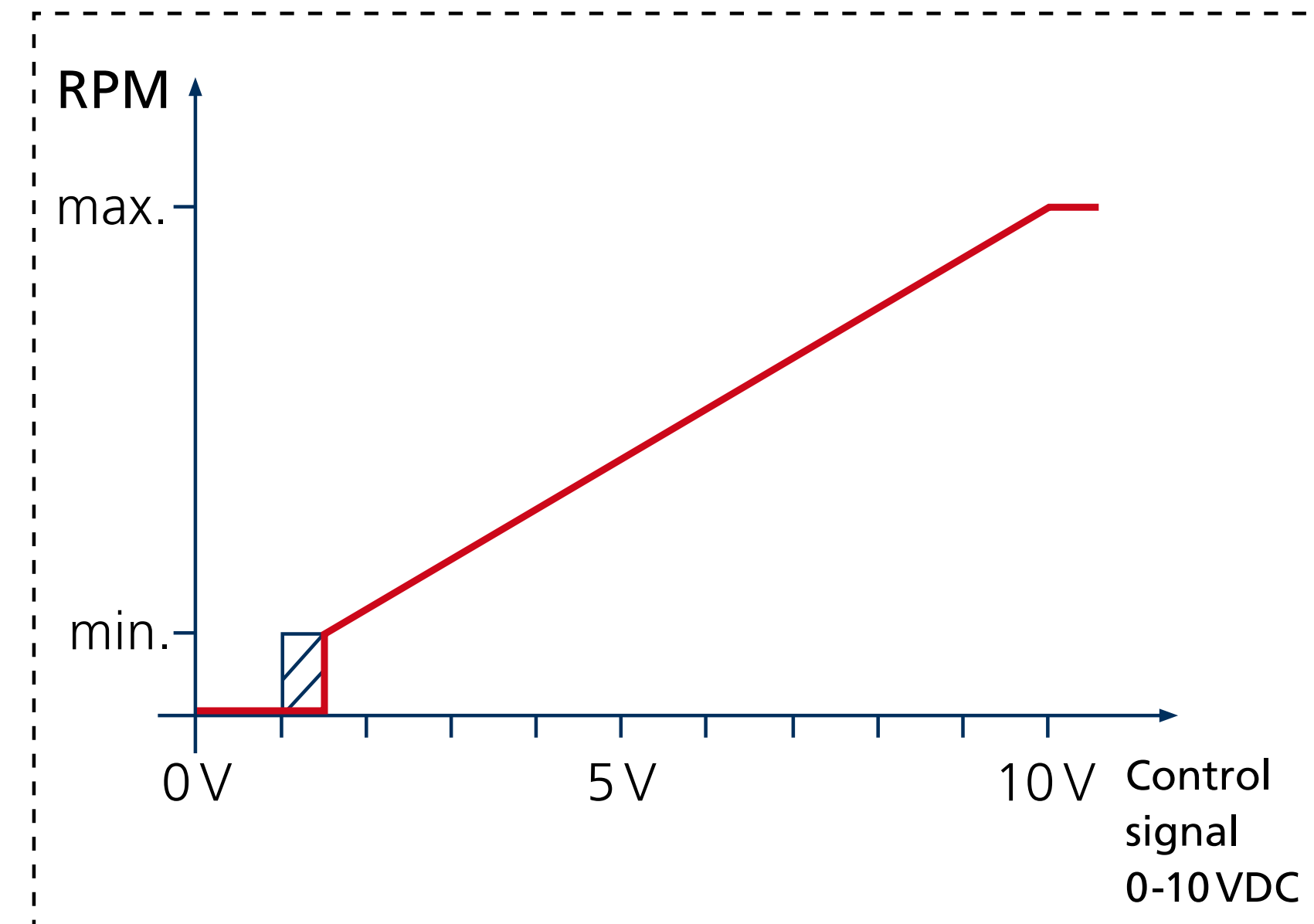
- > with BMS-Interface
- > for an easy and safe electrical connection
- > saves installation time
- > included in standard
- > for control options: KaControl, -C1 and 230 V electromechanical -00
- > including 230/24 V power unit



Details 5 | 5

KaControl room automation

- > KaControl technology factory-integrated for setting up entire networked systems based on the KaControl
- > interfaces for KNX or Modbus building automation as an optional plug-in group
- > 0–10 V analogue input for control of fan and valve via a single data point
- > design room control unit with intuitive user navigation
- > integrated timer program



0 – 1.5 V = device OFF

1.5 – 10 V = fan speed min ... 100 %

BMS-Interface/electromechanical (-00)

- > power supply: 230 V/50 Hz via factory fitted transformer
- > fan speed control 0–100 % via 0–10 VDC BMS contact
- > valve control, direct by BMS

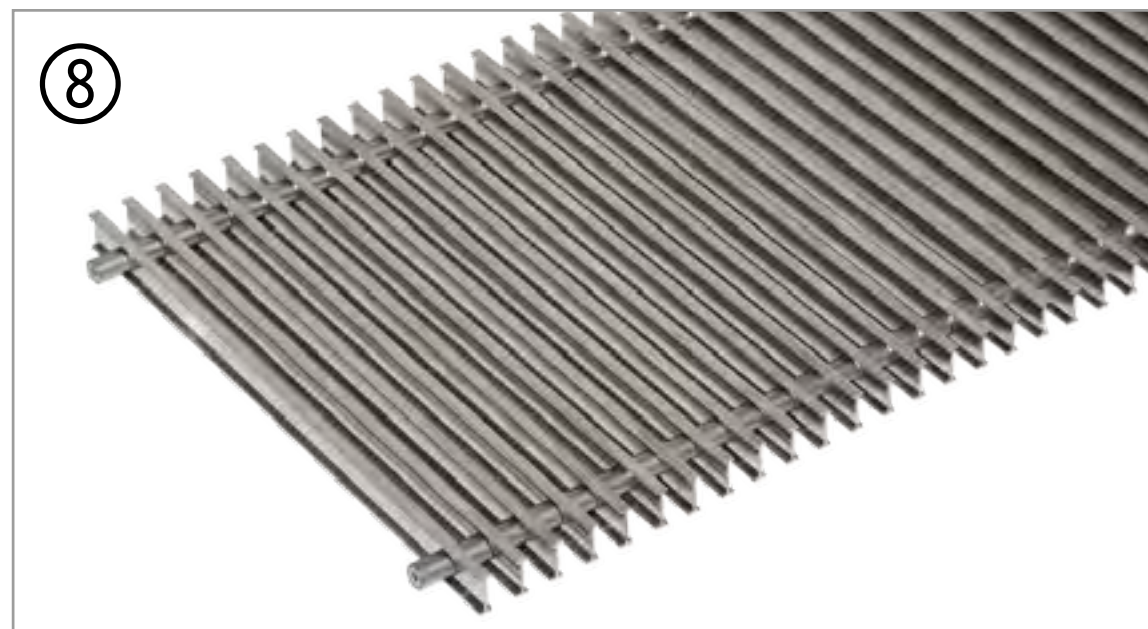
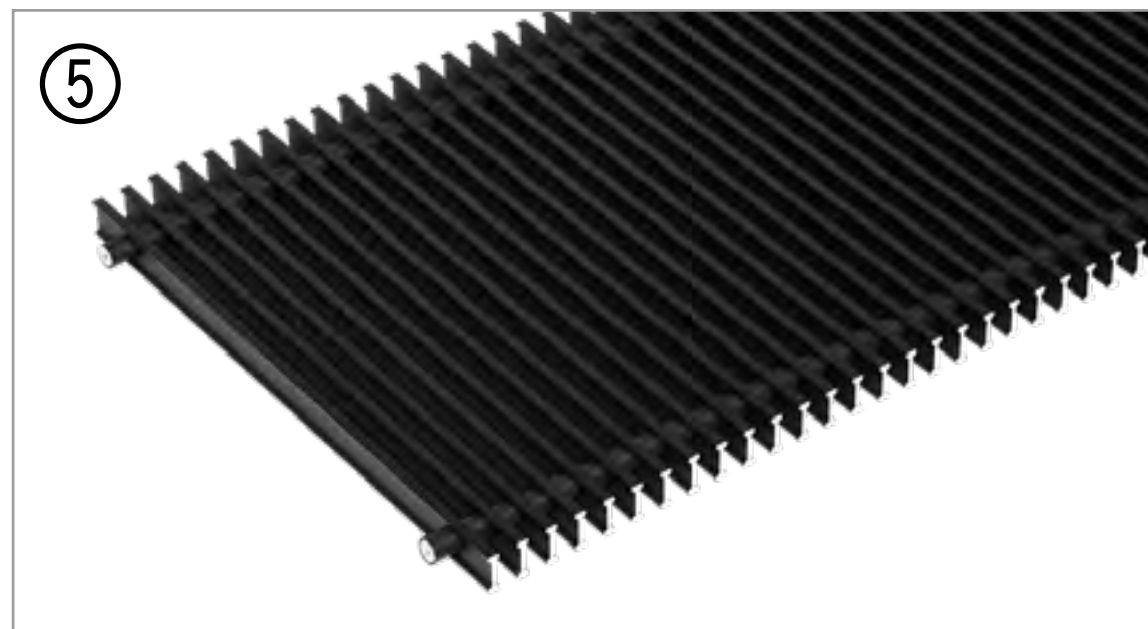
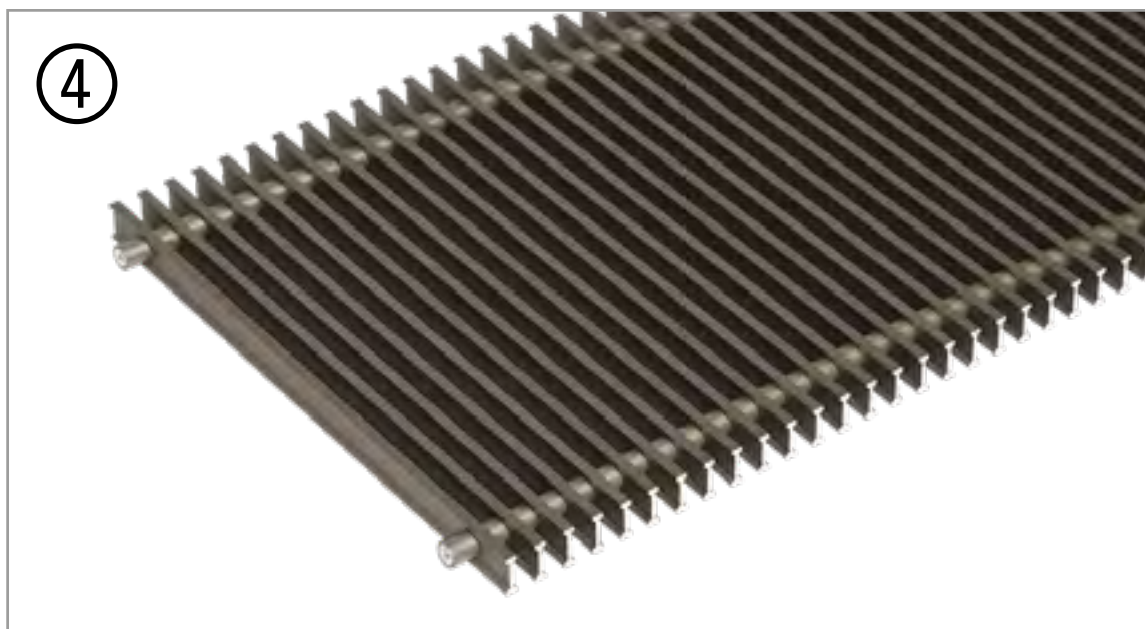
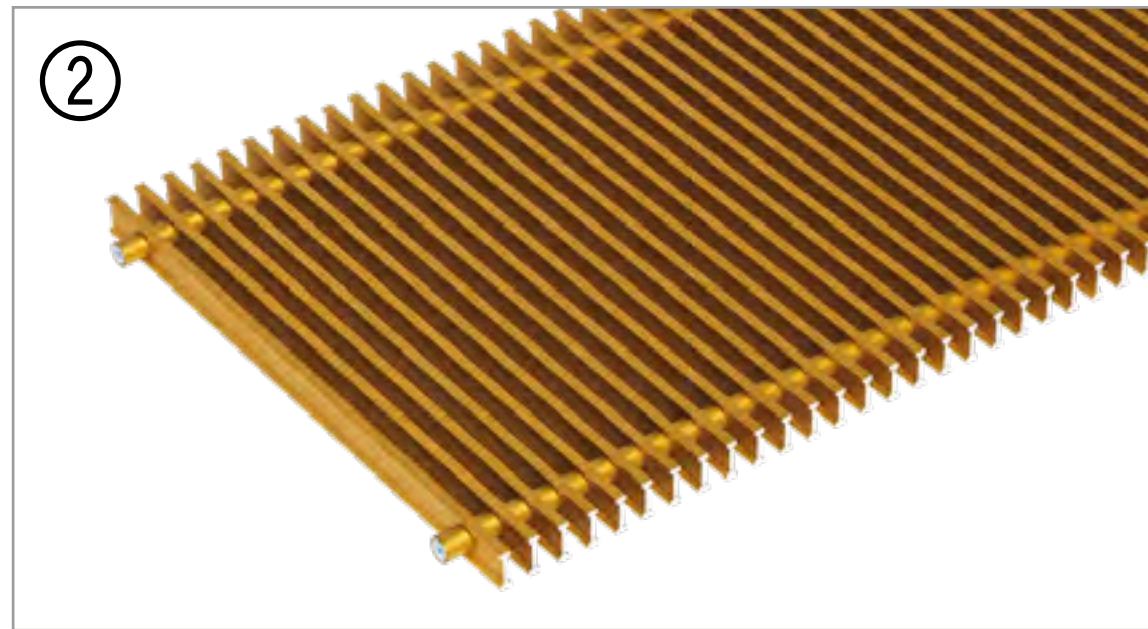
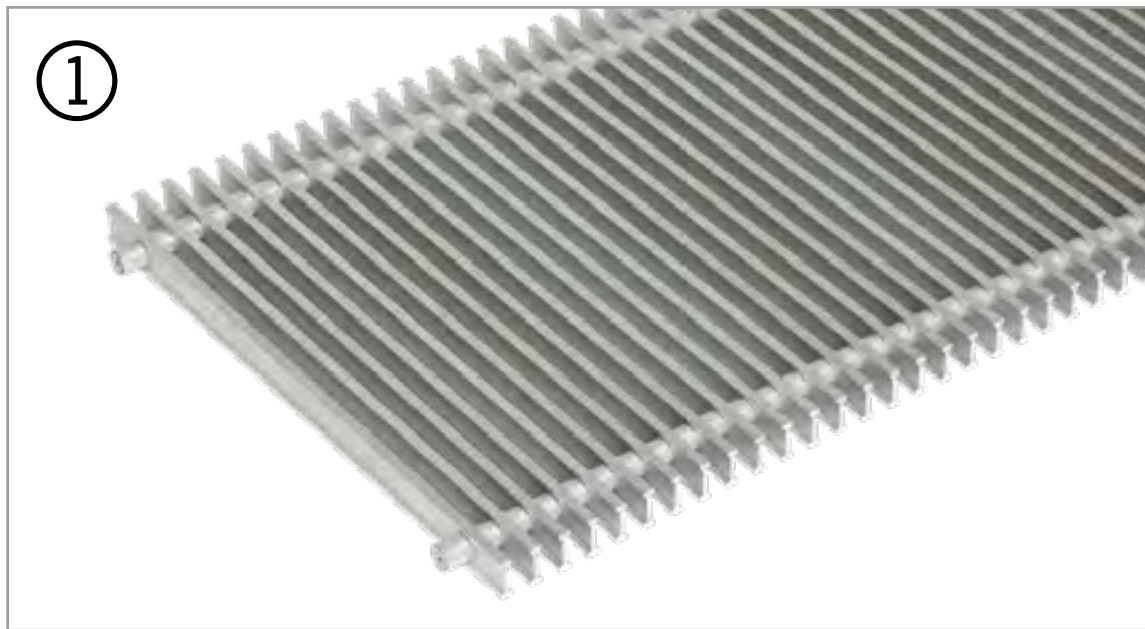
Control options



Combination of Katherm QK supply air module

- > treated supply air can be fed into rooms through the Katherm supply air module (Length 400 mm)

Katherm supply air module



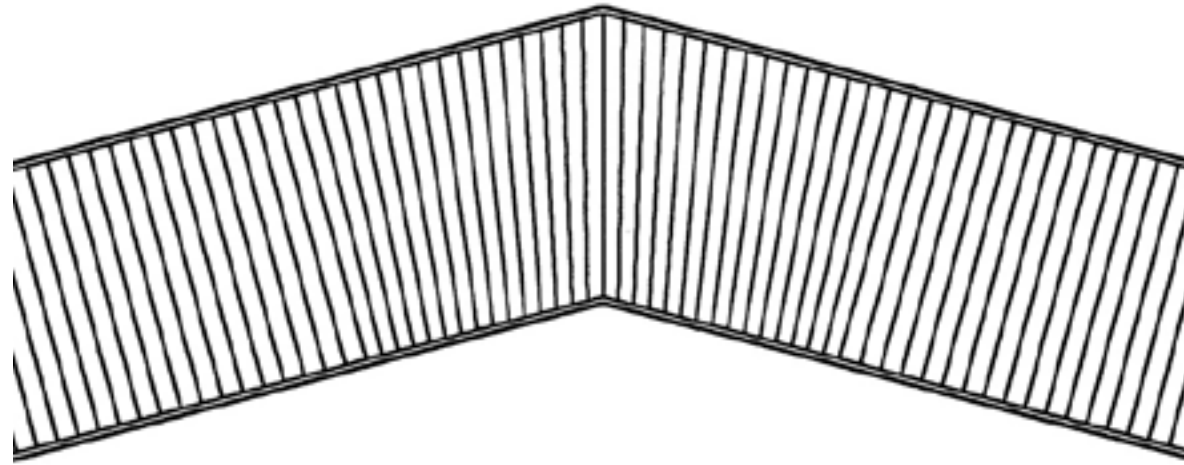
- ① Aluminium, natural anodised
- ② Aluminium, brass anodised
- ③ Aluminium, bronze anodised
- ④ Aluminium, bronze finish
- ⑤ Aluminium, black anodised
- ⑥ Aluminium, basalt grey painted DB 703
- ⑦ Stainless steel
- ⑧ Stainless steel, polished
- ⑨ Brass, natural

Aluminium roll-up grille, natural anodised:

- > double T-profile roll-up grille
- > bar dimension 18 x 5 mm (stainless steel 18 x 6 mm)
- > bar spacing 9 mm (stainless steel 10.5 mm)
- > connections made of corrosion-proof steel springs with spacers in a matching colour
- > 65 % free area

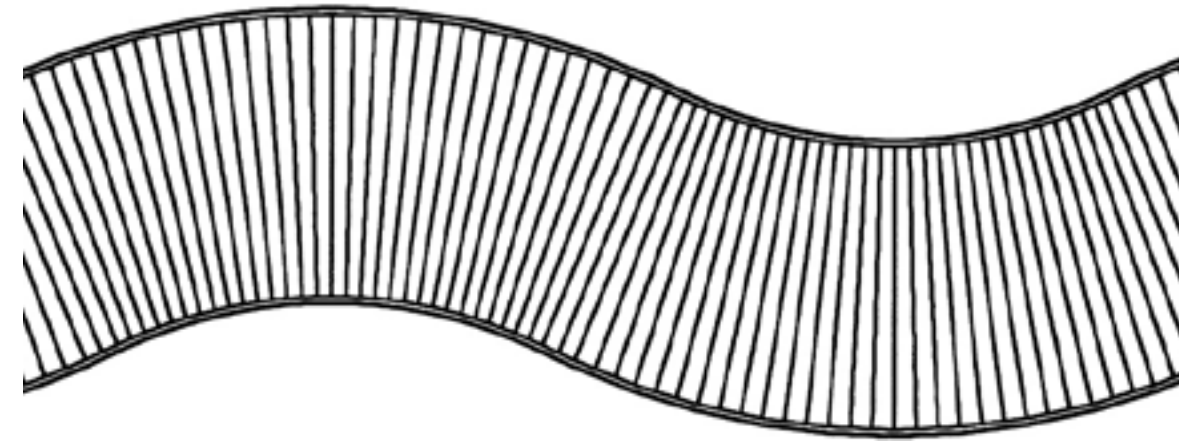
Matching grilles

We can even cope with challenging sites with ease with our range of possible shapes and sizes.
The following options are possible:



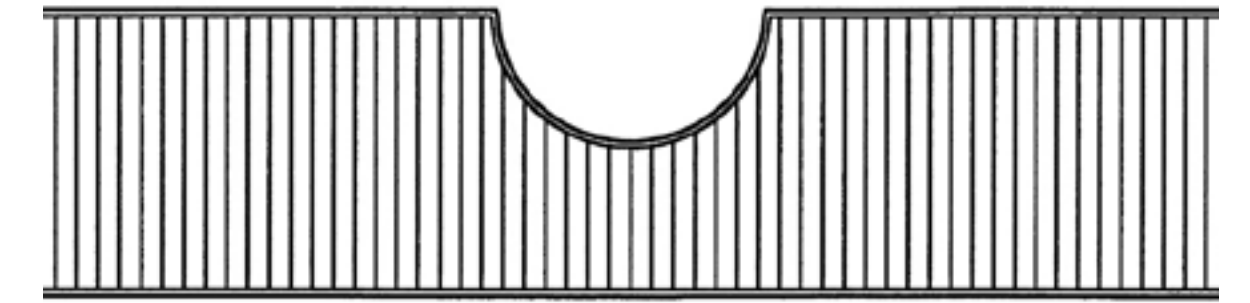
Mitred corners

- > Any angle possible
- > Curved



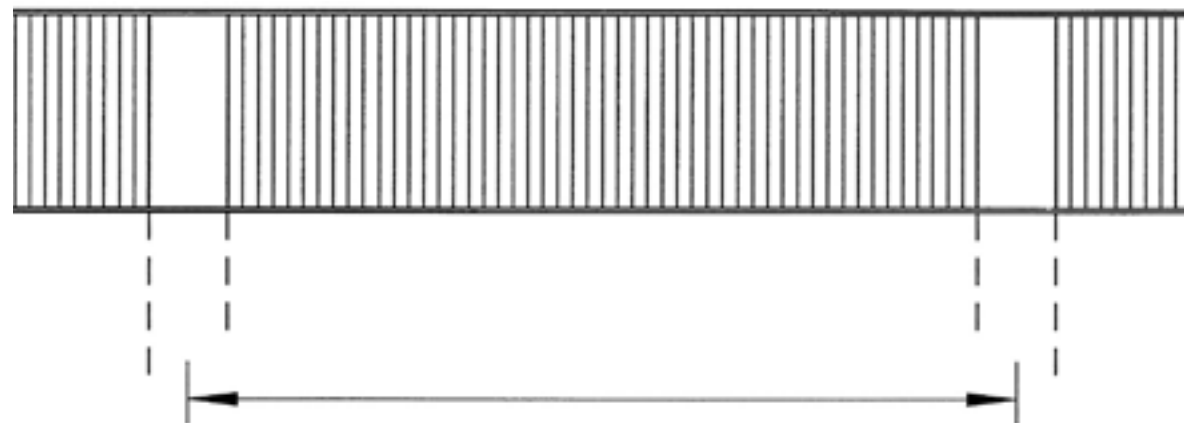
Curves

- > Design of all components in a curved shape



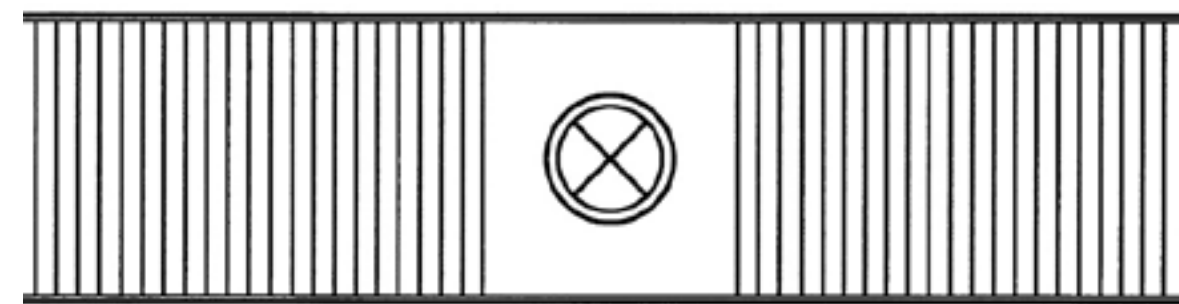
Cut-outs in the grille itself

- > Integration of building parts, such as columns, mullions, etc.



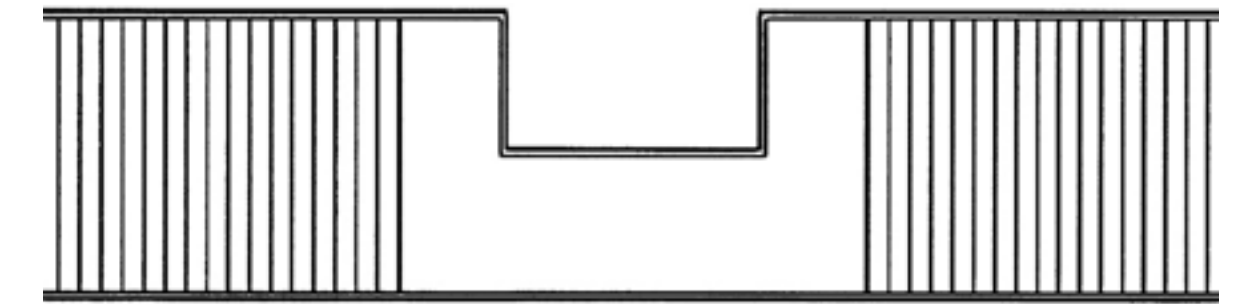
Cover plates at mullion positions

- > Polygonal shapes along building façade



Cover plate for an electrical installation

- > Luminaires
- > Sockets



Cut-outs with a cover plate

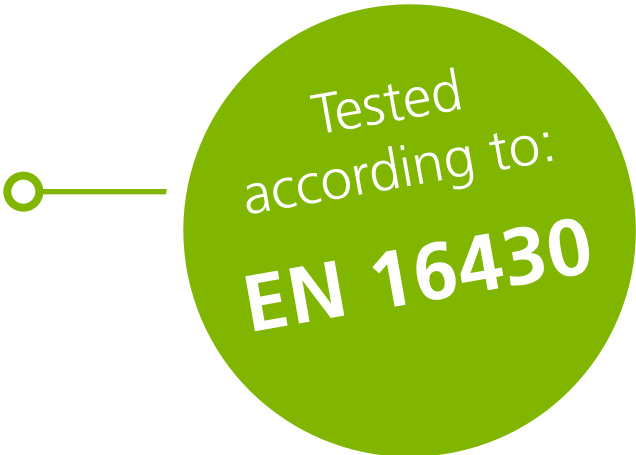
- > Integration of building parts, such as columns, mullions, etc.

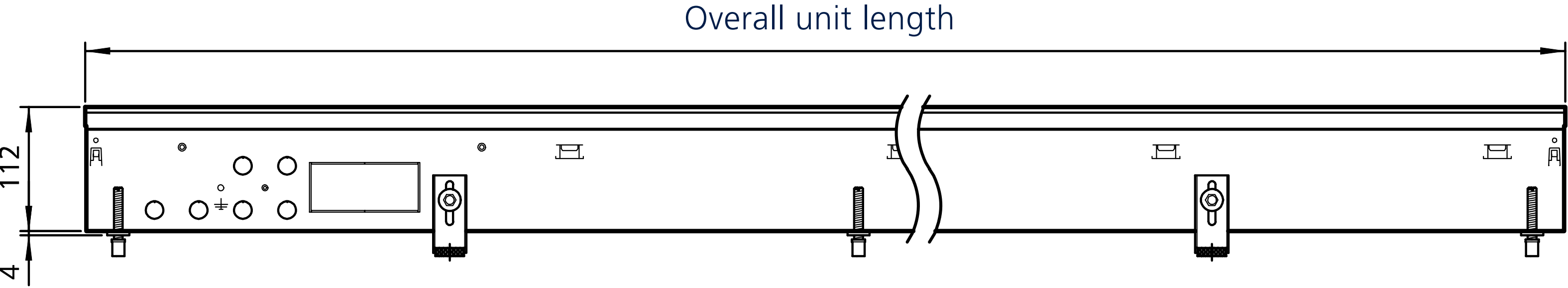
Model	Heat output ¹⁾					Sound pressure level ^{2) 3)}	Sound power level ³⁾
	at LPHW 82/71 °C	at LPHW 75/65 °C	at LPHW 60/50 °C	at LPHW 49/43 °C	at LPHW 40/35 °C		
	[W]	[W]	[W]	[W]	[W]	[dB(A)]	[dB(A)]
QK 190	437 – 5781	257 – 3413	169 – 2246	104 – 1383	< 20 – 41	< 28 – 49	< 28 – 49
QK 215	522 – 6025	315 – 3481	211 – 2252	133 – 1359	< 20 – 41	< 28 – 49	< 28 – 49

¹⁾ With fan-assisted convection, with trench lengths of 1000 mm to 3200 mm, at a room temperature of 20 °C.

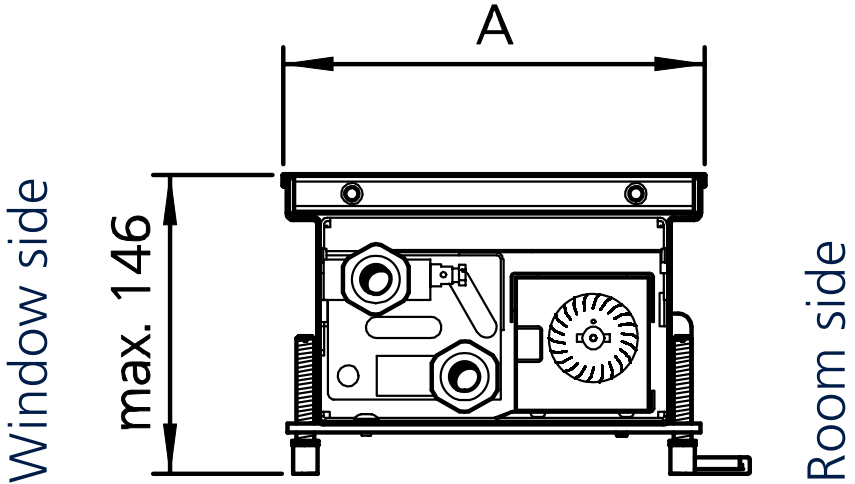
²⁾ The sound pressure levels were calculated with an assumed room insulation of 8 dB(A). This corresponds to a distance of 2 m, a room volume of 100 m³ and a reverberation time of 0.5 s (in accordance with VDI 2081).

³⁾ Sound pressure level < 20 dB (A) and sound power level < 28 dB (A) outside the usual measuring and audible range.

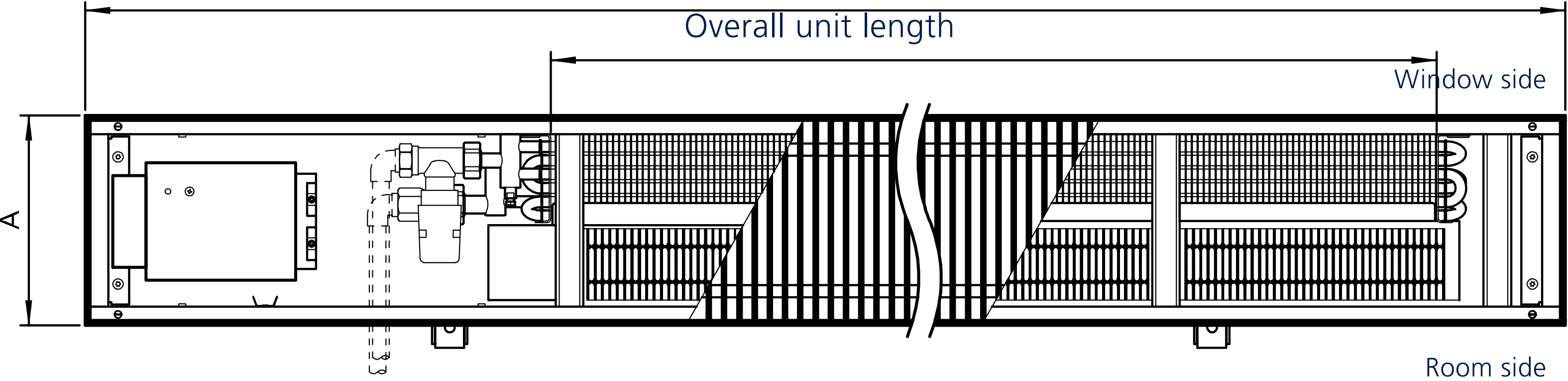




Frontview



Sectional view



Top view

Model	Unit width	Unit height	Unit lenght
	[mm]	[mm]	[mm]
QK 190	190	112 (+4)	1000 - 3200
QK 215	215	112 (+4)	1000 - 3200



Benefits for you!

Kampmann offers you the following service benefits:

- > On-site consultation
- > Diverse sampling
- > Planning support
- > Detailed discussions
- > Site-surveys
- > Individual training
- > After Sales Service

Find your contact person here:

[Kampmann.co.uk](https://kampmann.co.uk)

Contact