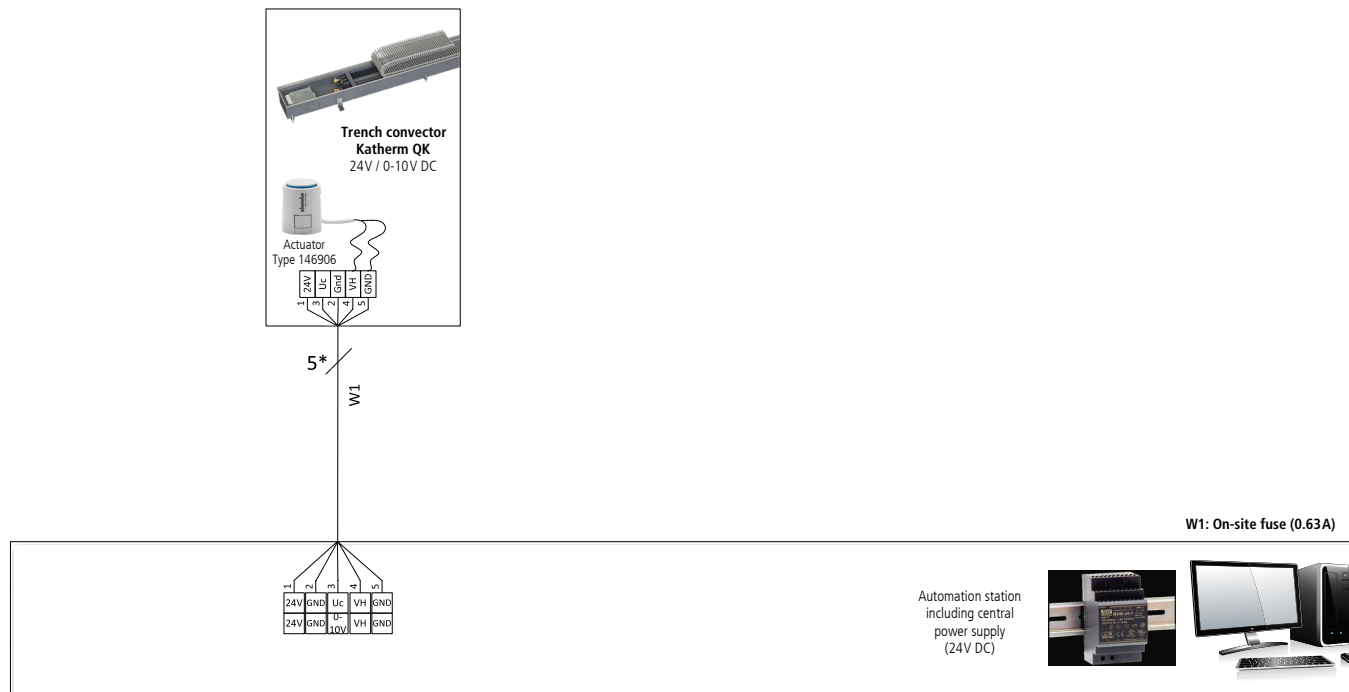


## Electrical cabling - BMS control

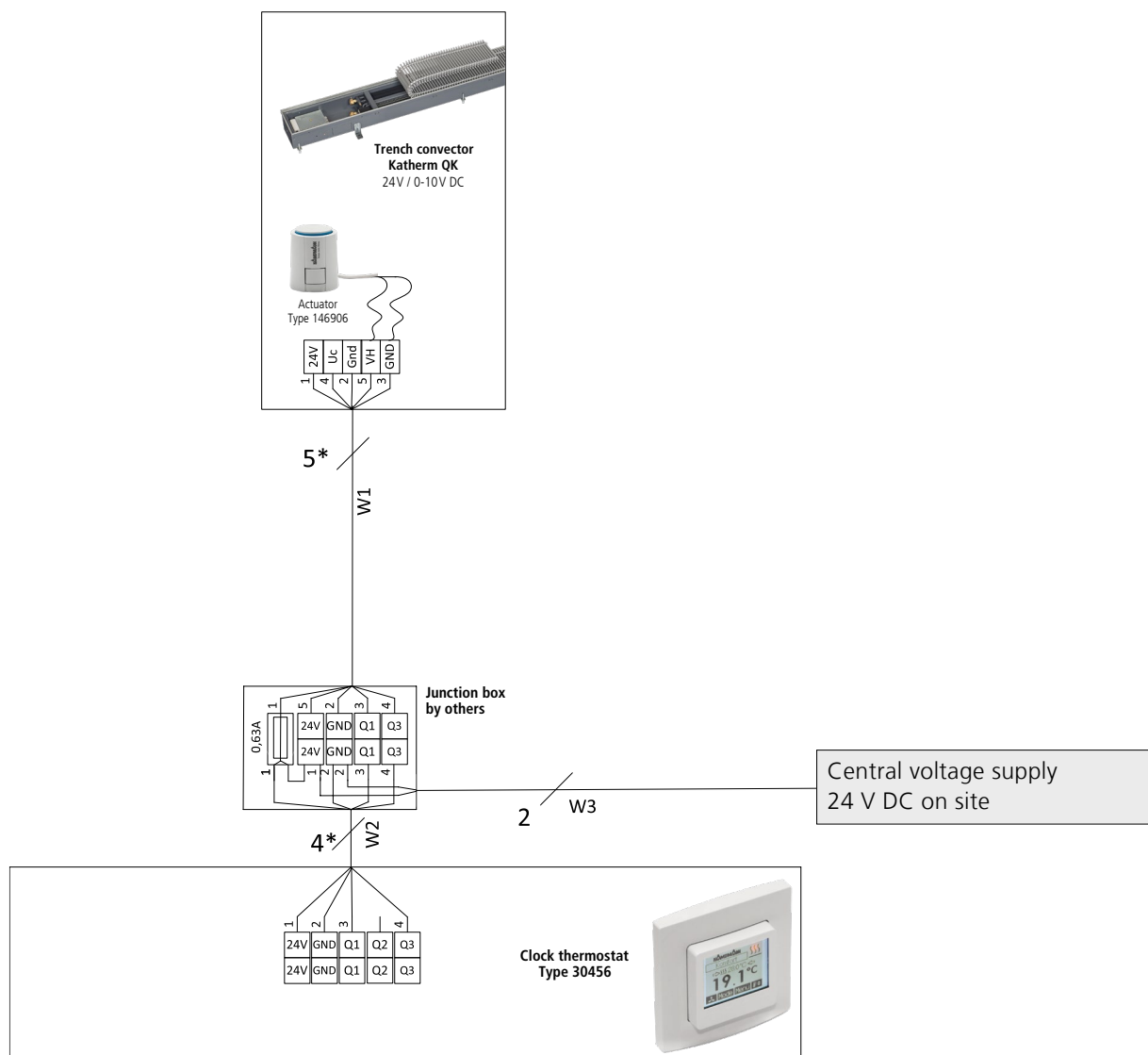


\* Lay shielded cables (e.g. IY(ST)Y, 0.8 mm), separately from high-voltage cables.

W1: Voltage supply and control signal for (on-site fuse 0.63 A) and actuator.

Subject to technical modifications: Refer to the control accessory documentation in the event of deviation from the circuit diagrams!

## Electrical cabling – Control via clock thermostat, type 30456



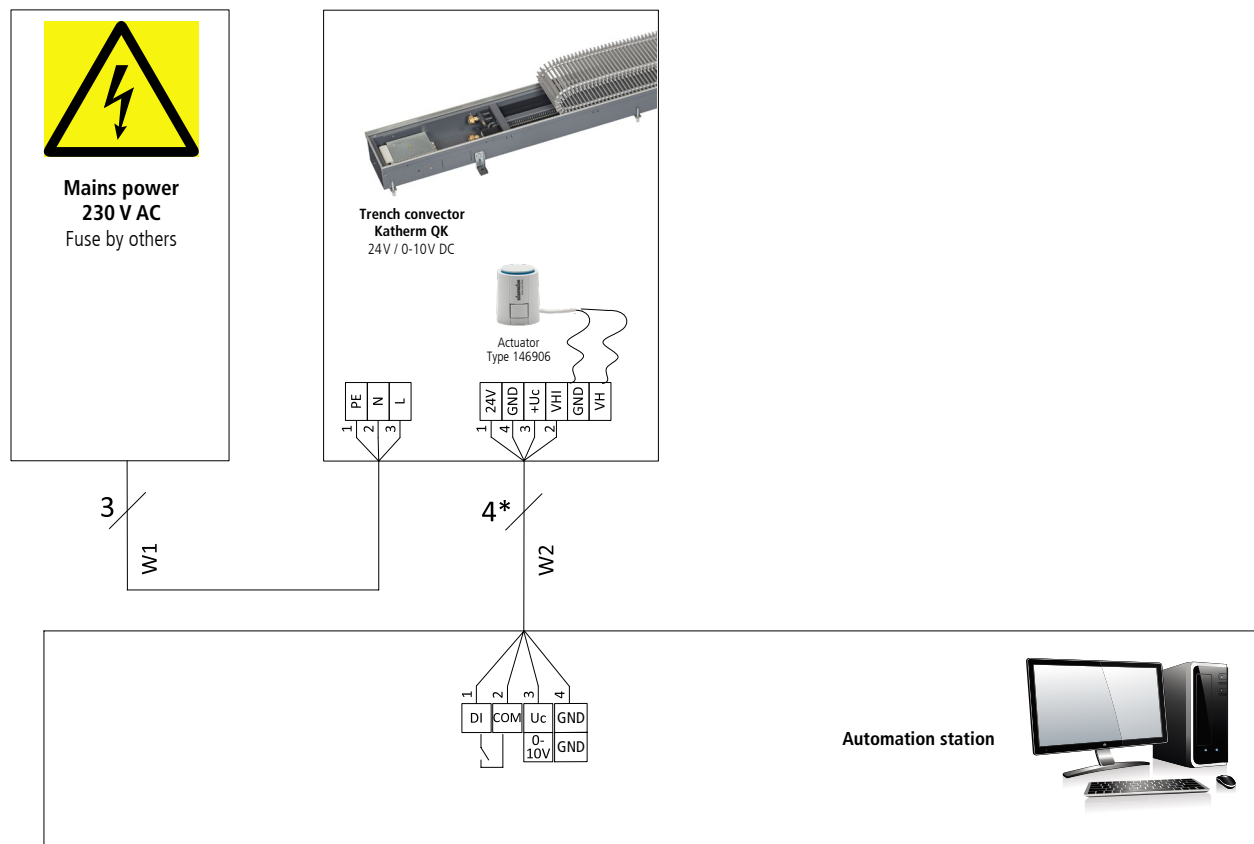
\* Lay shielded cables (e.g. Y(ST)Y, 0.8 mm) separately from power cables.

W1: Voltage supply and control signal for fan (on-site fuse 0.63 A) and actuator.

W2: Voltage supply and control signal for fan and actuator.

W3: Voltage supply (fuse by others).

## Electrical cabling - BMS control



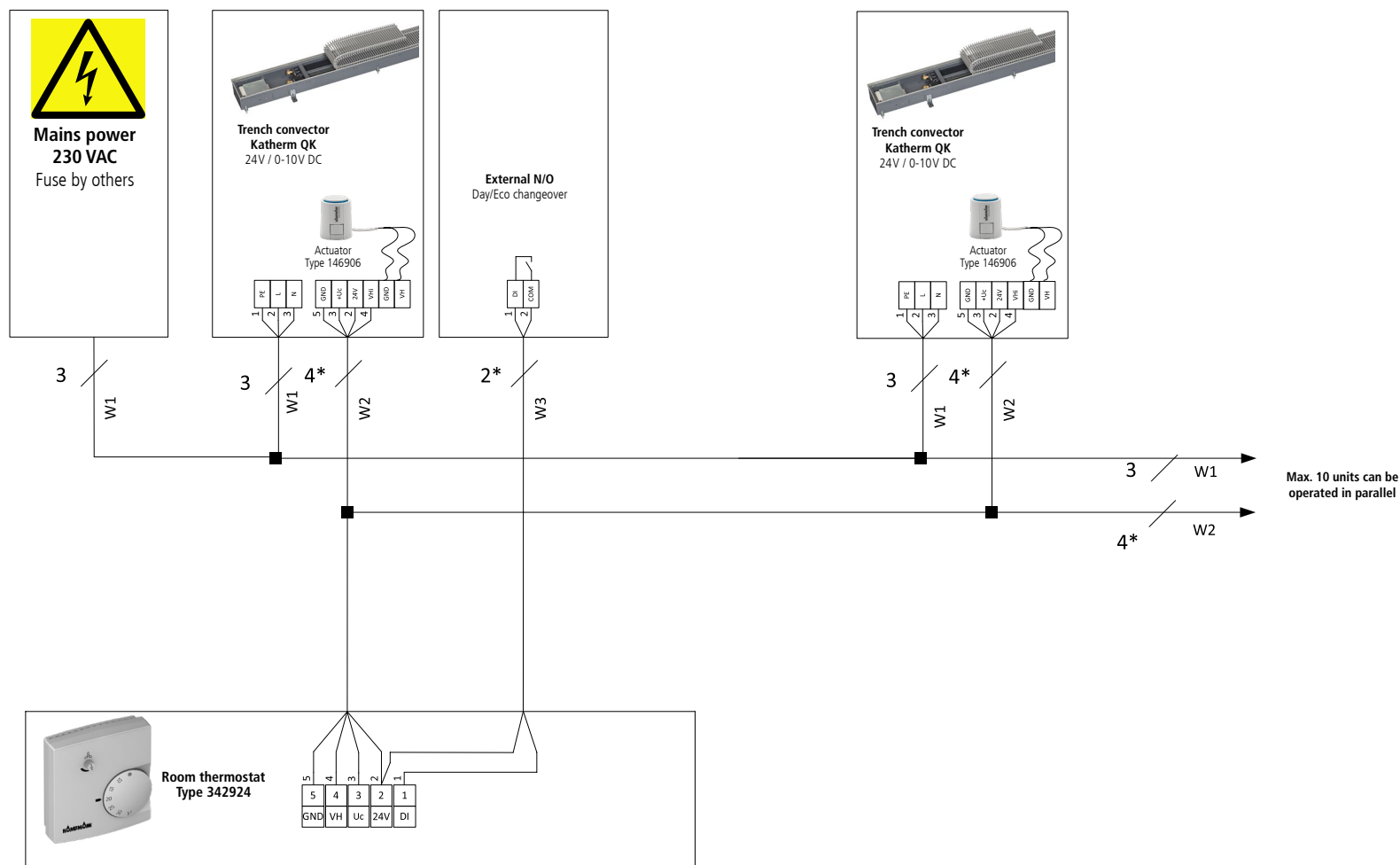
\* Lay shielded cables (e.g. IY(ST)Y, 0.8 mm) separately from power cables.

W1: power supply

W2: Control signal for fan and actuator

Subject to technical modifications: Refer to the control accessory documentation in the event of deviation from the circuit diagrams!

## Electrical cabling – Control via room thermostat, type 342924



\* Lay shielded cables (e.g. IY(ST)Y, 0.8 mm) separately from power cables.

W1: power supply

W2: Control signal for fan and actuator

W3: Operating mode changeover (optional)

Subject to technical modifications: Refer to the control accessory documentation in the event of deviation from the circuit diagrams!